



[Go to Product page](#)

Datasheet for ABIN265550  
**anti-EBV-Gp350 antibody**

3 Images

### Overview

Quantity:	100 µg
Target:	EBV-Gp350 (EBV gp350)
Reactivity:	Epstein-Barr Virus (EBV)
Host:	Mouse
Clonality:	Monoclonal
Conjugate:	This EBV-Gp350 antibody is un-conjugated
Application:	ELISA, Immunofluorescence (IF)

### Product Details

Clone:	10B5
Isotype:	IgG1 kappa
Purification:	Affinity Purified
Purity:	> 95 % IgG by SDS-PAGE

### Target Details

Target:	EBV-Gp350 (EBV gp350)
Abstract:	<a href="#">EBV gp350 Products</a>
Target Type:	Viral Protein
Background:	Synonyms: gp350, BLLF1a

## Application Details

Application Notes: Immunofluorescence: 1+ at 1:3.200. ELISA: 0.100 at 1:800. This antibody is known not to function in western blot under our standard assay conditions

Restrictions: For Research Use only

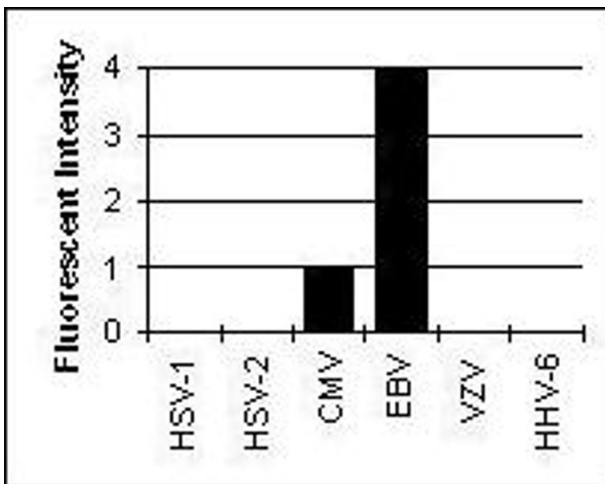
## Handling

Concentration: 1.0 mg/ml

Buffer: Phosphate Buffered Saline pH 7.4 (no azide)

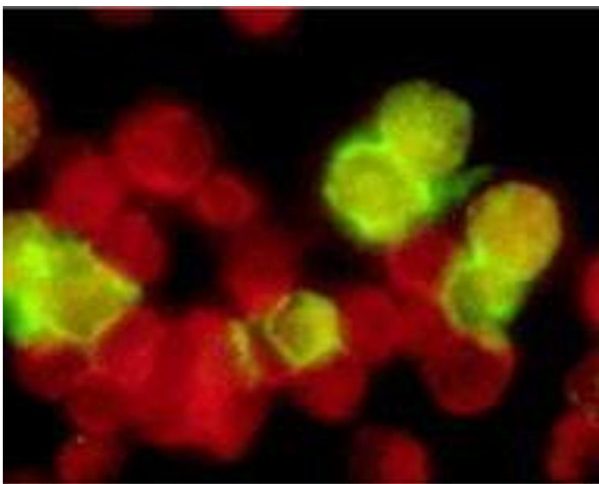
Preservative: Azide free

## Images



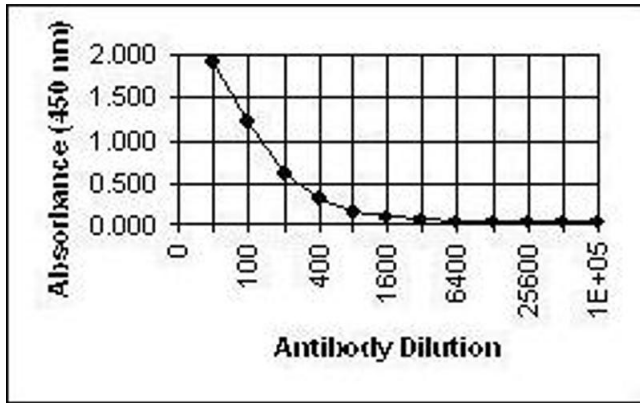
### Immunofluorescence

**Image 1.** Cross Reactivity Results determined by IFA



### Immunofluorescence

**Image 2.**



## ELISA

Image 3.