

Datasheet for ABIN265568 anti-HSV-2 gE antibody

3 Images



[Go to Product page](#)

Overview

Quantity:	100 µg
Target:	HSV-2 gE (HSV2 gE)
Reactivity:	Herpes Simplex Virus (HSV)
Host:	Mouse
Clonality:	Monoclonal
Conjugate:	This HSV-2 gE antibody is un-conjugated
Application:	ELISA, Immunofluorescence (IF), Western Blotting (WB)

Product Details

Clone:	6F10
Isotype:	IgG2a kappa
Purification:	Affinity Purified
Purity:	> 95 % IgG by SDS-PAGE

Target Details

Target:	HSV-2 gE (HSV2 gE)
Abstract:	HSV2 gE Products
Target Type:	Viral Protein
Background:	Synonyms: pUs9, gE-2, gp92, 92KD Fc Receptor

Application Details

Application Notes: Immunofluorescence: 1+ at 1:6.400. ELISA: 0.100 at 1:25.600. This antibody is known not to function in western blot under our standard assay conditions

Restrictions: For Research Use only

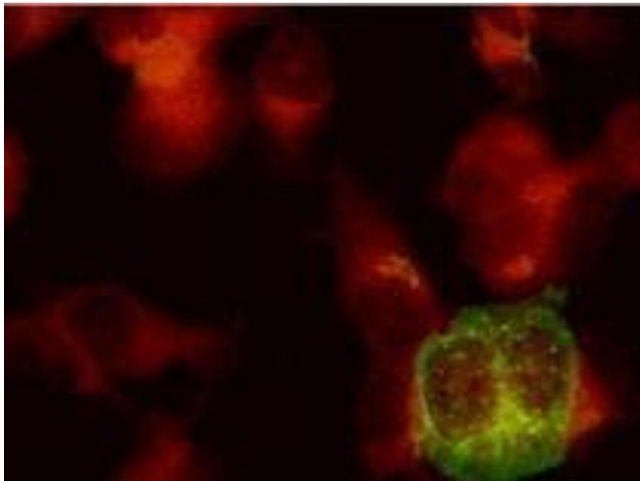
Handling

Concentration: 1.0 mg/ml

Buffer: Phosphate Buffered Saline pH 7.4 (no azide)

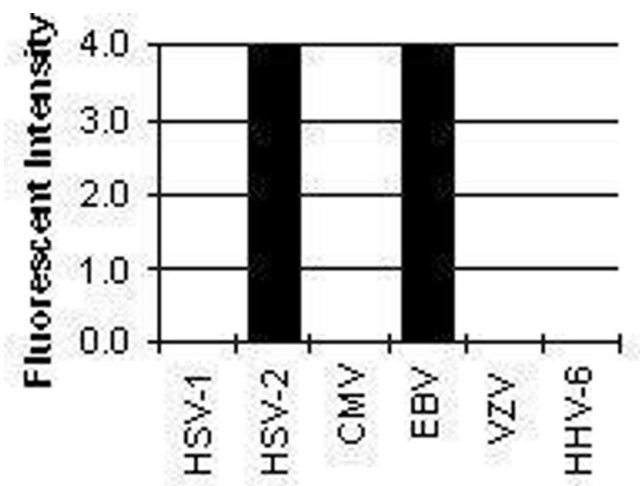
Preservative: Azide free

Images



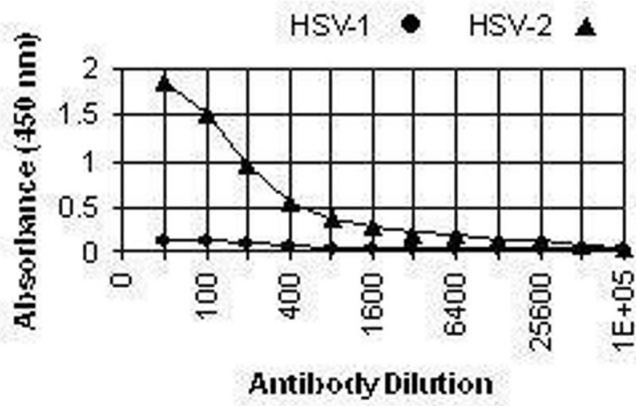
Immunofluorescence

Image 1.



ELISA

Image 2. Cross Reactivity Results determined by IFA



ELISA

Image 3.