

Datasheet for ABIN2656845
anti-GZMA antibody (Alexa Fluor 594)

3 Images

[Go to Product page](#)

Overview

Quantity:	100 µg
Target:	GZMA
Reactivity:	Human
Host:	Mouse
Clonality:	Monoclonal
Conjugate:	This GZMA antibody is conjugated to Alexa Fluor 594
Application:	Flow Cytometry (FACS)

Product Details

Clone:	CB9
Isotype:	IgG1 kappa
Purification:	The antibody was purified by affinity chromatography and conjugated with Alexa Fluor® 594 under optimal conditions. The solution is free of unconjugated Alexa Fluor® 594.

Target Details

Target:	GZMA
Alternative Name:	Granzyme A (GZMA Products)
Background:	Granzyme A is a 28 kD disulfide-linked homodimeric protein and the most abundant of the proteases occurring in CTL granules. It is homologous to other serine esterases, including other granzymes, mast cell proteases, and neutrophil cathepsins. Granzyme B is thought to be a rapidly-acting apoptotic enzyme, while Granzyme A is slow acting.

Target Details

Pathways: [Apoptosis](#)

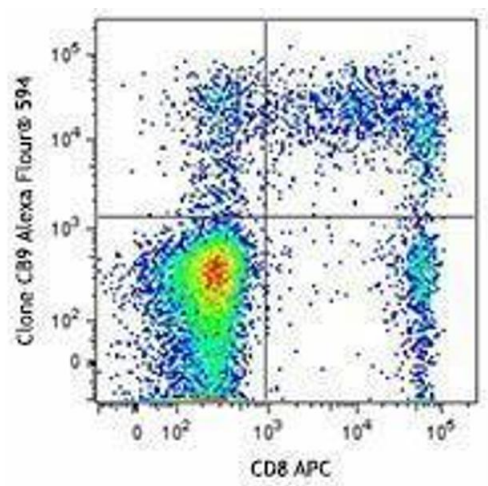
Application Details

Application Notes:	Optimal working dilution should be determined by the investigator.
Restrictions:	For Research Use only

Handling

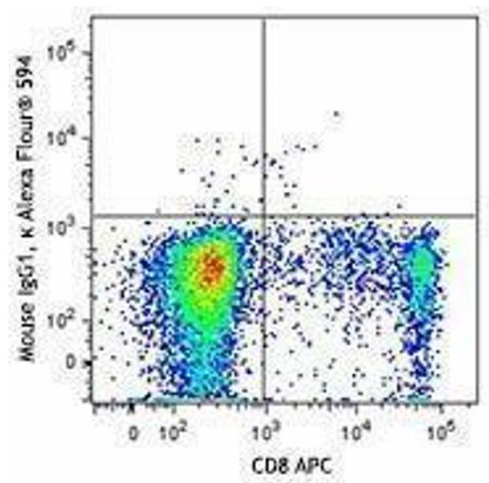
Concentration:	0.5 mg/mL
Buffer:	Phosphate-buffered solution, pH 7.2, containing 0.09 % sodium azide.
Preservative:	Sodium azide
Precaution of Use:	This product contains Sodium azide: a POISONOUS AND HAZARDOUS SUBSTANCE which should be handled by trained staff only.
Handling Advice:	Protect from prolonged exposure to light. Do not freeze.
Storage:	4 °C
Storage Comment:	The antibody solution should be stored undiluted between 2°C and 8°C

Images



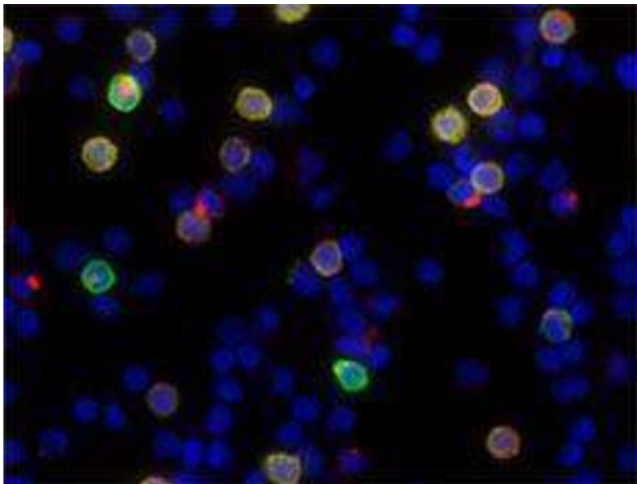
Flow Cytometry

Image 1.



Flow Cytometry

Image 2.



Immunofluorescence

Image 3.