

Datasheet for ABIN2656952

**anti-KIR2DL4/CD158d antibody (APC)****2** Images[Go to Product page](#)

## Overview

Quantity:	100 tests
Target:	KIR2DL4/CD158d (KIR2DL4)
Reactivity:	Human
Host:	Mouse
Clonality:	Monoclonal
Conjugate:	This KIR2DL4/CD158d antibody is conjugated to APC
Application:	Biochemical Assay (BCA)

## Product Details

Clone:	MAb 33 (33)
Isotype:	IgG1 kappa
Purification:	The antibody was purified by affinity chromatography and conjugated with APC under optimal conditions. The solution is free of unconjugated APC and unconjugated antibody.

## Target Details

Target:	KIR2DL4/CD158d (KIR2DL4)
Alternative Name:	CD158d ( <a href="#">KIR2DL4 Products</a> )
Background:	CD158 Molecules, also known as KIRs (killer cell immunoglobulin-like receptors), are a family of transmembrane proteins with either two (KIR2D) or three (KIR3D) Ig-like extracellular domains. Some KIRs, with long cytoplasmic domains, contain ITIMs and possess inhibitory functions and others, with short cytoplasmic regions, lack ITIM and have activation functions. Fourteen

## Target Details

polymorphic KIR genes have been reported in humans. KIR2DL4 (CD158d) is a unique receptor which has an ITIM in its cytoplasmic domain and a charged residue in the transmembrane domain. It possesses both inhibitory and activation functions. Two common alleles (10A and 9A) of KIR2DL4 have been reported. The 10A allele (with 10 adenines at the end of the transmembrane exon) receptor is expressed on CD56<sup>high</sup> NK subset, whereas its expression on CD56<sup>dim</sup> NK cells is inducible upon culture. The major 9A allele receptor is a secreted form. HLA-G is the ligand of CD158d.

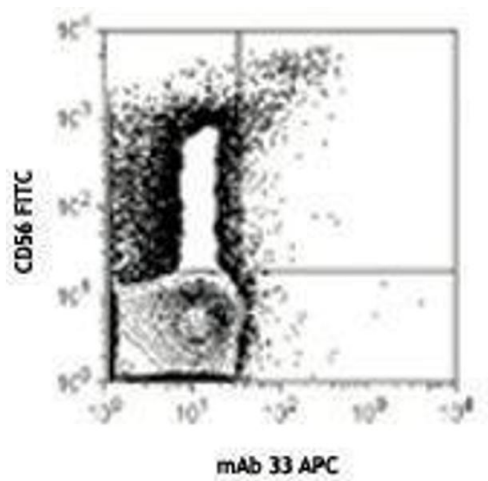
## Application Details

Application Notes:	Optimal working dilution should be determined by the investigator.
Restrictions:	For Research Use only

## Handling

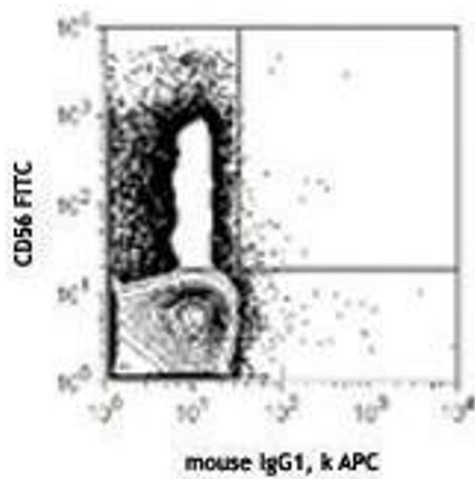
Buffer:	Phosphate-buffered solution, pH 7.2, containing 0.09 % sodium azide and 0.2 % (w/v) BSA .
Preservative:	Sodium azide
Precaution of Use:	This product contains Sodium azide: a POISONOUS AND HAZARDOUS SUBSTANCE which should be handled by trained staff only.
Handling Advice:	Protect from prolonged exposure to light. Do not freeze.
Storage:	4 °C
Storage Comment:	The antibody solution should be stored undiluted between 2°C and 8°C

## Images



### Flow Cytometry

Image 1.



## Flow Cytometry

Image 2.