



[Go to Product page](#)

Datasheet for ABIN2656957  
**anti-KLRC1 antibody (APC)**

2 Images

Overview

Quantity:	50 µg
Target:	KLRC1
Reactivity:	Mouse
Host:	Mouse
Clonality:	Monoclonal
Conjugate:	This KLRC1 antibody is conjugated to APC
Application:	Intracellular Flow Cytometry (ICFC)

Product Details

Clone:	16A11
Isotype:	IgG2b kappa
Purification:	The antibody was purified by affinity chromatography and conjugated with APC under optimal conditions. The solution is free of unconjugated APC and unconjugated antibody.

Target Details

Target:	KLRC1
Alternative Name:	CD159a ( <a href="#">KLRC1 Products</a> )
Background:	CD159a, also known as NKG2A or KLRC1 (killer cell lectin-like receptor subfamily C, member 1), is a 43 kD type II transmembrane protein with extracellular C-type lectin domains. It belongs to the killer cell lectin-like receptor family also known as the NKG2 family. It is expressed on NK and NKT cells and activated CD8+ T cells. NKG2A binds to non-classical MHC class I molecule

## Target Details

---

Qa-1 and causes inhibition of NK cell-mediated target-cell lysis.

## Application Details

---

Application Notes: Optimal working dilution should be determined by the investigator.

Restrictions: For Research Use only

## Handling

---

Concentration: 0.2 mg/mL

Buffer: Phosphate-buffered solution, pH 7.2, containing 0.09 % sodium azide.

Preservative: Sodium azide

Precaution of Use: This product contains Sodium azide: a POISONOUS AND HAZARDOUS SUBSTANCE which should be handled by trained staff only.

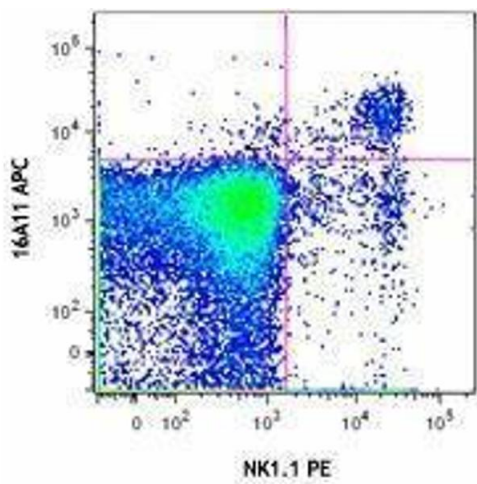
Handling Advice: Protect from prolonged exposure to light. Do not freeze.

Storage: 4 °C

Storage Comment: The antibody solution should be stored undiluted between 2°C and 8°C

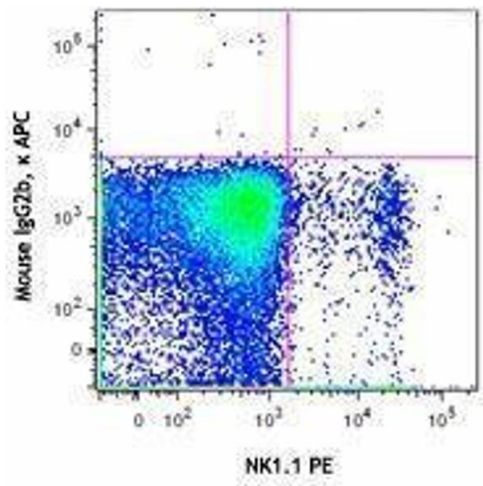
## Images

---



### Flow Cytometry

Image 1.



Flow Cytometry

Image 2.