



Datasheet for ABIN2656998
anti-CCR6 antibody (APC)



[Go to Product page](#)

2 Images

Overview

Quantity:	100 tests
Target:	CCR6
Reactivity:	Human
Host:	Mouse
Clonality:	Monoclonal
Conjugate:	This CCR6 antibody is conjugated to APC
Application:	Western Blotting (WB), Flow Cytometry (FACS), Immunoprecipitation (IP)

Product Details

Clone:	G034E3
Isotype:	IgG2b kappa
Cross-Reactivity:	Cynomolgus, Rhesus Monkey
Purification:	The antibody was purified by affinity chromatography and conjugated with APC under optimal conditions. The solution is free of unconjugated APC and unconjugated antibody.

Target Details

Target:	CCR6
Alternative Name:	CD196 (CCR6 Products)
Background:	CCR6, also known as CD196, is a chemokine receptor that is expressed on immature dendritic cells, B lymphocytes, and memory T cells. CCR6 binds CCL20, although members of the β defensin family also bind CCR6 with a lower affinity. CCR6 positive cells, and its ligand CCL20,

Target Details

have been detected in numerous organs, especially the secondary lymphoid organ. CCL20 is selectively made by the follicle-associated epithelium (FAE) overlying Peyers patches (PPs) and isolated lymphoid follicles (ILFs). CCL20 contributes to the recruitment of CCR6-expressing B cells to these structures. In humans, CCR6 can function to mediate arrest of T cells on dermal endothelial cells and is highly expressed on T cells resident in both normal and psoriatic skin. CCR6 and/or CCL20 have been implicated in the pathogenesis of rheumatoid arthritis and inflammatory bowel disease. Human T cells that are able to produce IL-17 express CCR6. It suggests that CCL20 and CCR6 have a role in inflammatory diseases by recruiting Th17 cells to target tissues.

Pathways: [cAMP Metabolic Process](#)

Application Details

Application Notes: Optimal working dilution should be determined by the investigator.

Restrictions: For Research Use only

Handling

Buffer: Phosphate-buffered solution, pH 7.2, containing 0.09 % sodium azide and 0.2 % (w/v) BSA .

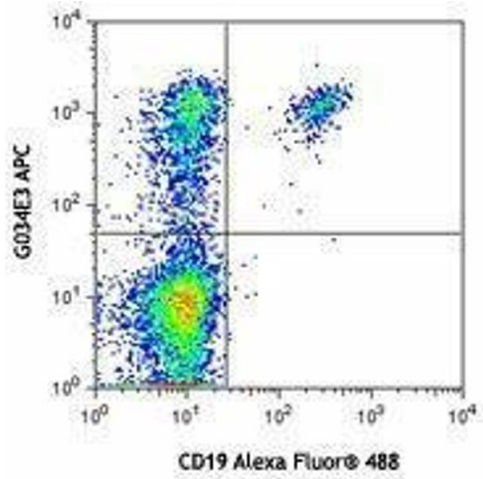
Preservative: Sodium azide

Precaution of Use: This product contains Sodium azide: a POISONOUS AND HAZARDOUS SUBSTANCE which should be handled by trained staff only.

Handling Advice: Protect from prolonged exposure to light. Do not freeze.

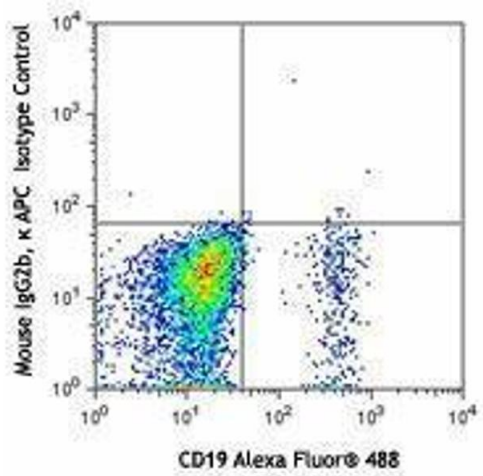
Storage: 4 °C

Storage Comment: The antibody solution should be stored undiluted between 2°C and 8°C



Flow Cytometry

Image 1.



Flow Cytometry

Image 2.