



[Go to Product page](#)

Datasheet for ABIN2657018

## anti-CD200 Receptor 3 (CD200R3) antibody (APC)

### 2 Images

#### Overview

Quantity:	100 µg
Target:	CD200 Receptor 3 (CD200R3)
Reactivity:	Mouse
Host:	Rat
Clonality:	Monoclonal
Conjugate:	APC
Application:	Flow Cytometry (FACS), Immunoprecipitation (IP)

#### Product Details

Clone:	Ba13
Isotype:	IgG2a kappa
Purification:	The antibody was purified by affinity chromatography and conjugated with APC under optimal conditions. The solution is free of unconjugated APC and unconjugated antibody.

#### Target Details

Target:	CD200 Receptor 3 (CD200R3)
Alternative Name:	CD200R3 ( <a href="#">CD200R3 Products</a> )
Background:	CD200R3, also known as CD200RLb and OX-2 Receptor 3, is a disulfide-linked dimeric CD200R-like receptor which belongs to immunoglobulin superfamily. Its positively charged amino acid lysine associates with ITAM- or YxxM motif-bearing adaptor molecules such as DAP12, DAP10, FcRγ, and CD3ζ. CD200R3 functions as an activating receptor to regulate IgE independent

## Target Details

---

immune response.

## Application Details

---

Application Notes: Optimal working dilution should be determined by the investigator.

Restrictions: For Research Use only

## Handling

---

Concentration: 0.2 mg/mL

Buffer: Phosphate-buffered solution, pH 7.2, containing 0.09 % sodium azide.

Preservative: Sodium azide

Precaution of Use: This product contains Sodium azide: a POISONOUS AND HAZARDOUS SUBSTANCE which should be handled by trained staff only.

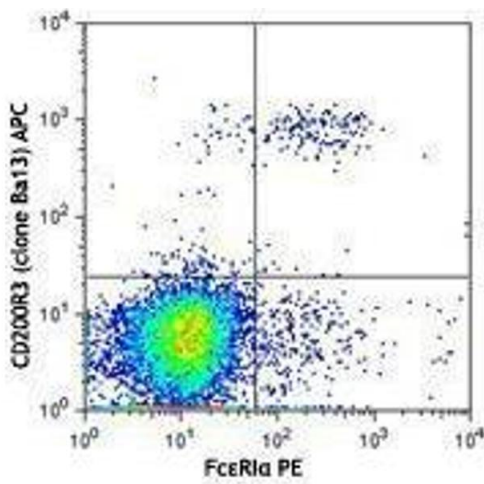
Handling Advice: Protect from prolonged exposure to light. Do not freeze.

Storage: 4 °C

Storage Comment: The antibody solution should be stored undiluted between 2°C and 8°C

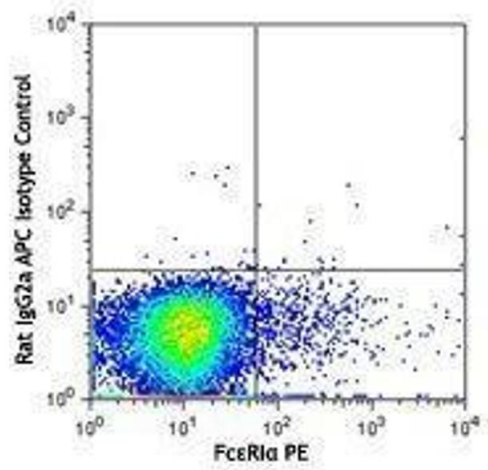
## Images

---



### Flow Cytometry

Image 1.



## Flow Cytometry

Image 2.