

Datasheet for ABIN2657032  
**anti-CD207 antibody (APC)**



[Go to Product page](#)

2 Images

## Overview

Quantity:	100 µg
Target:	CD207
Reactivity:	Human, Mouse
Host:	Mouse
Clonality:	Monoclonal
Conjugate:	This CD207 antibody is conjugated to APC
Application:	Flow Cytometry (FACS)

## Product Details

Clone:	4C7
Isotype:	IgG2a kappa
Cross-Reactivity:	Cynomolgus, Pig (Porcine)
Purification:	The antibody was purified by affinity chromatography and conjugated with APC under optimal conditions. The solution is free of unconjugated APC and unconjugated antibody.

## Target Details

Target:	CD207
Alternative Name:	CD207 ( <a href="#">CD207 Products</a> )
Background:	CD207, also known as langerin, is a 40 kD single-pass type II transmembrane protein, member of the C-type lectin family. CD207 is expressed on the cell surface and Birbeck granules (BGs) of Langerhans cells, and subsets of thymic and splenic dendritic cells. Its ligands are mannose,

Target Details

n-acetylglucosamine, fucose, and sulfated glycans. Langerin is involved in the antigen processing pathway through capture and internalization of its ligands.

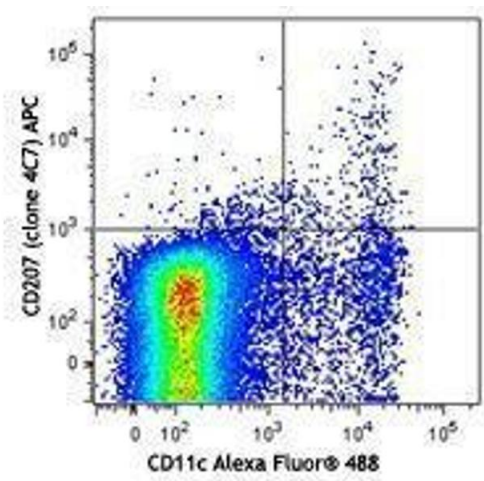
Application Details

Application Notes:	Optimal working dilution should be determined by the investigator.
Restrictions:	For Research Use only

Handling

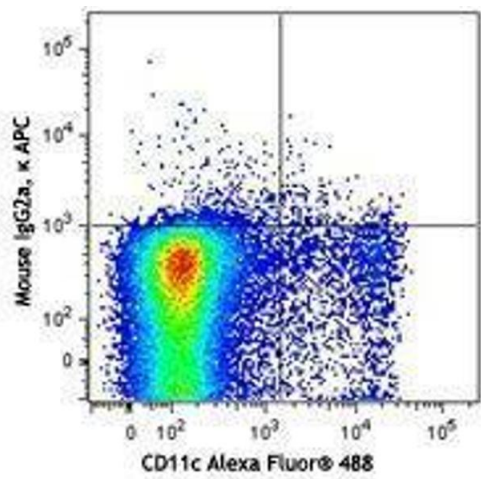
Concentration:	0.2 mg/mL
Buffer:	Phosphate-buffered solution, pH 7.2, containing 0.09 % sodium azide.
Preservative:	Sodium azide
Precaution of Use:	This product contains Sodium azide: a POISONOUS AND HAZARDOUS SUBSTANCE which should be handled by trained staff only.
Handling Advice:	Protect from prolonged exposure to light. Do not freeze.
Storage:	4 °C
Storage Comment:	The antibody solution should be stored undiluted between 2°C and 8°C

Images



Flow Cytometry

Image 1.



Flow Cytometry

Image 2.