



[Go to Product page](#)

Datasheet for ABIN2657054
anti-BrdU antibody (Alexa Fluor 488)

2 Images

Overview

Quantity:	100 tests
Target:	BrdU
Reactivity:	Please inquire
Host:	Mouse
Clonality:	Monoclonal
Conjugate:	This BrdU antibody is conjugated to Alexa Fluor 488
Application:	Flow Cytometry (FACS)

Product Details

Clone:	3D4
Isotype:	IgG1 kappa
Purification:	The antibody was purified by affinity chromatography and conjugated with Alexa Fluor® 488 under optimal conditions.

Target Details

Target:	BrdU
Alternative Name:	BrdU (BrdU Products)
Target Type:	Chemical
Background:	BrdU is a uridine derivative and a structural analog of thymidine, which can be incorporated into DNA during the S-phase of a cell cycle as a substitute for thymidine. Cells can be pulse-labeled with BrdU and analyzed with antibodies against BrdU to determine the proportion of cells in the

Target Details

S-phase of the cell cycle during a given interval.

Application Details

Application Notes: Optimal working dilution should be determined by the investigator.

Restrictions: For Research Use only

Handling

Buffer: Phosphate-buffered solution, pH 7.2, containing 0.09 % sodium azide and 0.2 % (w/v) BSA .

Preservative: Sodium azide

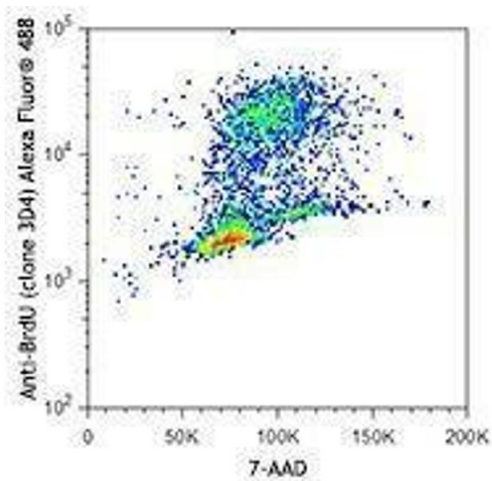
Precaution of Use: This product contains Sodium azide: a POISONOUS AND HAZARDOUS SUBSTANCE which should be handled by trained staff only.

Handling Advice: Protect from prolonged exposure to light. Do not freeze.

Storage: 4 °C

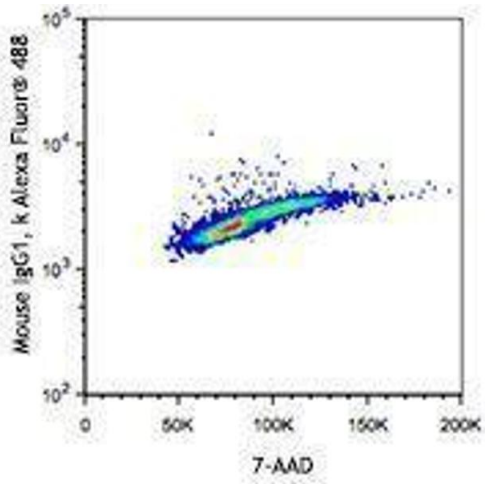
Storage Comment: The antibody solution should be stored undiluted between 2°C and 8°C

Images



Flow Cytometry

Image 1.



Flow Cytometry

Image 2.