

Datasheet for ABIN2657119
anti-CD101 antibody (Alexa Fluor 647)[Go to Product page](#)**2** Images

Overview

Quantity:	100 tests
Target:	CD101
Reactivity:	Human
Host:	Mouse
Clonality:	Monoclonal
Conjugate:	This CD101 antibody is conjugated to Alexa Fluor 647
Application:	Flow Cytometry (FACS), Intracellular Flow Cytometry (ICFC)

Product Details

Clone:	BB27
Isotype:	IgG1 kappa
Purification:	The antibody was purified by affinity chromatography and conjugated with Alexa Fluor® 647 under optimal conditions.

Target Details

Target:	CD101
Alternative Name:	CD101 (CD101 Products)
Background:	CD101 is a type I transmembrane glycoprotein also known as V7 and P126. It is a 120 kD homodimer and member of the EWI family within the Ig superfamily. CD101 is found on monocytes, granulocytes, dendritic cells, and a subpopulation of peripheral blood T cells and activated T cells. It has been reported that CD101 expressing Tregs possess higher inhibitory

Target Details

function. The biological function of CD101 is still not clear, but it has been found that BB27 antibody is able to inhibit T cell proliferative responses and this inhibitory function can be overcome by high doses of IL-2. Activation of CD101 on dendritic cells is able to induce IL-10 production.

Application Details

Application Notes: Optimal working dilution should be determined by the investigator.

Restrictions: For Research Use only

Handling

Buffer: Phosphate-buffered solution, pH 7.2, containing 0.09 % sodium azide and 0.2 % (w/v) BSA .

Preservative: Sodium azide

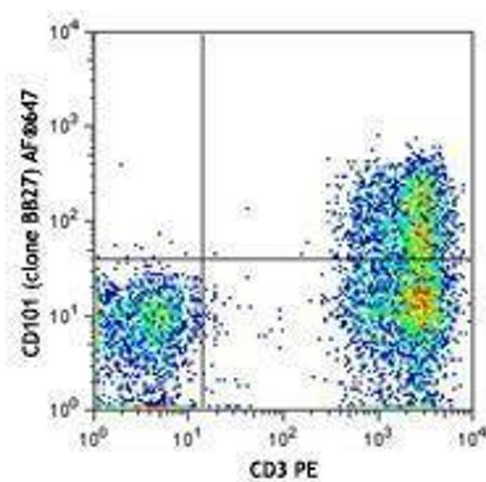
Precaution of Use: This product contains Sodium azide: a POISONOUS AND HAZARDOUS SUBSTANCE which should be handled by trained staff only.

Handling Advice: Protect from prolonged exposure to light. Do not freeze.

Storage: 4 °C

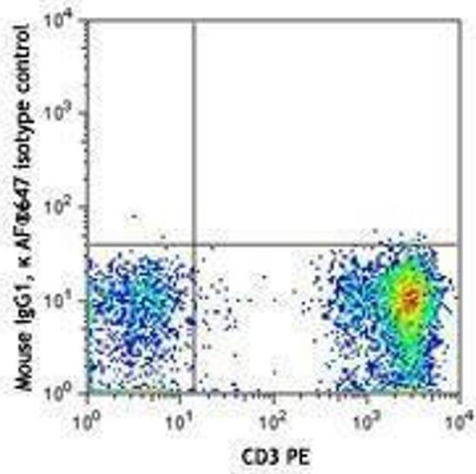
Storage Comment: The antibody solution should be stored undiluted between 2°C and 8°C

Images



Flow Cytometry

Image 1.



Flow Cytometry

Image 2.