

Datasheet for ABIN2657139

anti-CXCR2 antibody (Alexa Fluor 647)[Go to Product page](#)**2** Images

Overview

Quantity:	100 µg
Target:	CXCR2
Reactivity:	Mouse
Host:	Rat
Clonality:	Monoclonal
Conjugate:	This CXCR2 antibody is conjugated to Alexa Fluor 647
Application:	Flow Cytometry (FACS)

Product Details

Clone:	SA045E1
Isotype:	IgG2a kappa
Purification:	The antibody was purified by affinity chromatography and conjugated with Alexa Fluor® 647 under optimal conditions.

Target Details

Target:	CXCR2
Alternative Name:	CD182 (CXCR2 Products)
Background:	CD182, also known as CXCR2, is a G-protein coupled receptor with seven transmembrane regions that is involved in chemotaxis, neutrophil activation, and angiogenesis. CXCR2 is expressed by neutrophils, basophils, a subset of T cells, monocytes, macrophages, natural killer (NK) and natural killer T cells (NKT). Its ligands are CXCL1, CXCL2, CXCL3, and CXCL5.

Target Details

Pathways: [cAMP Metabolic Process](#)

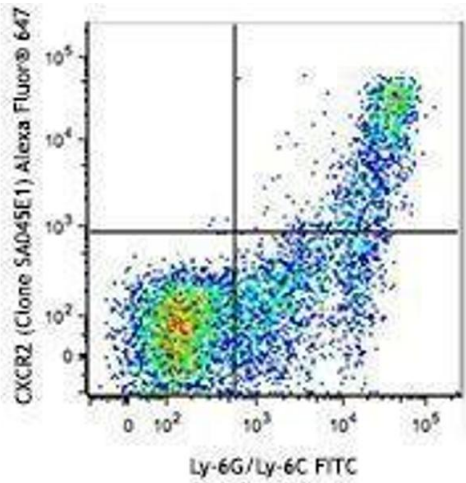
Application Details

Application Notes:	Optimal working dilution should be determined by the investigator.
Restrictions:	For Research Use only

Handling

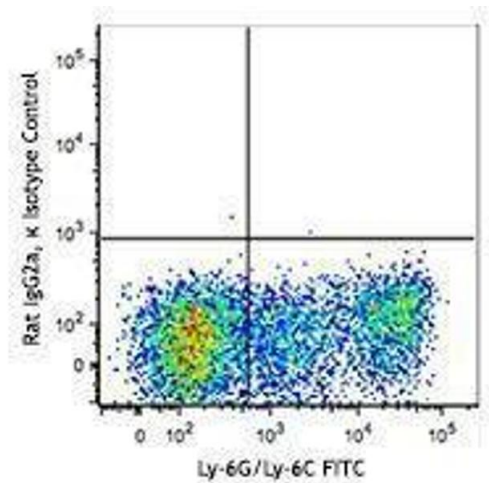
Concentration:	0.5 mg/mL
Buffer:	Phosphate-buffered solution, pH 7.2, containing 0.09 % sodium azide.
Preservative:	Sodium azide
Precaution of Use:	This product contains Sodium azide: a POISONOUS AND HAZARDOUS SUBSTANCE which should be handled by trained staff only.
Handling Advice:	Protect from prolonged exposure to light. Do not freeze.
Storage:	4 °C
Storage Comment:	The antibody solution should be stored undiluted between 2°C and 8°C

Images



Flow Cytometry

Image 1.



Flow Cytometry

Image 2.