

Datasheet for ABIN2657236  
**anti-XCR1 antibody (Alexa Fluor 647)**[Go to Product page](#)

## 2 Images

## Overview

Quantity:	100 µg
Target:	XCR1
Reactivity:	Mouse, Rat
Host:	Mouse
Clonality:	Monoclonal
Conjugate:	This XCR1 antibody is conjugated to Alexa Fluor 647
Application:	Intracellular Flow Cytometry (ICFC)

## Product Details

Clone:	ZET
Isotype:	IgG2b kappa
Purification:	The antibody was purified by affinity chromatography and conjugated with Alexa Fluor® 647 under optimal conditions.

## Target Details

Target:	XCR1
Alternative Name:	XCR1 ( <a href="#">XCR1 Products</a> )
Background:	XCR1, also known as GPR5 or CCXCR1, is a 38 kD, G-protein coupled, seven transmembrane receptor, and the only member of the "C" chemokine receptor family. XCR1 mediates chemotaxis of XCL1 and XCL2 (lymphotactin-1 and -2), and defines a subset of CD8α+ conventional dendritic cells capable of antigen cross-presentation.

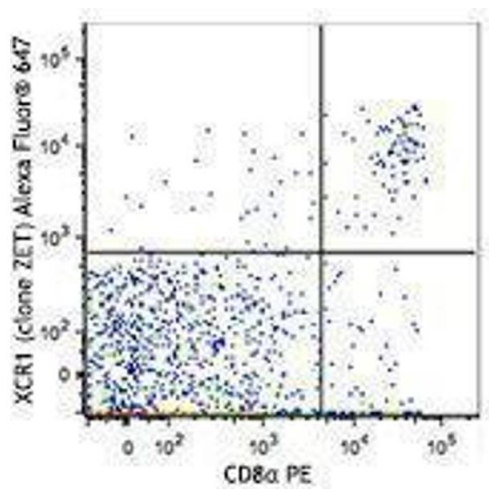
## Application Details

Application Notes:	Optimal working dilution should be determined by the investigator.
Restrictions:	For Research Use only

## Handling

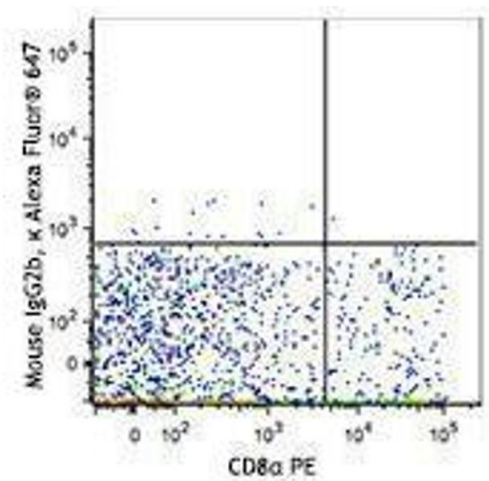
Concentration:	0.5 mg/mL
Buffer:	Phosphate-buffered solution, pH 7.2, containing 0.09 % sodium azide.
Preservative:	Sodium azide
Precaution of Use:	This product contains Sodium azide: a POISONOUS AND HAZARDOUS SUBSTANCE which should be handled by trained staff only.
Handling Advice:	Protect from prolonged exposure to light. Do not freeze.
Storage:	4 °C
Storage Comment:	The antibody solution should be stored undiluted between 2°C and 8°C

## Images



### Flow Cytometry

Image 1.



Flow Cytometry

Image 2.