

Datasheet for ABIN2657246

anti-CXCR5 antibody (Alexa Fluor 700)**2** Images[Go to Product page](#)

Overview

Quantity:	100 tests
Target:	CXCR5
Reactivity:	Human
Host:	Mouse
Clonality:	Monoclonal
Conjugate:	This CXCR5 antibody is conjugated to Alexa Fluor 700
Application:	Flow Cytometry (FACS), Immunoprecipitation (IP), Functional Studies (Func)

Product Details

Clone:	J252D4
Isotype:	IgG1 kappa
Purification:	The antibody was purified by affinity chromatography and conjugated with Alexa Fluor® 700 under optimal conditions.

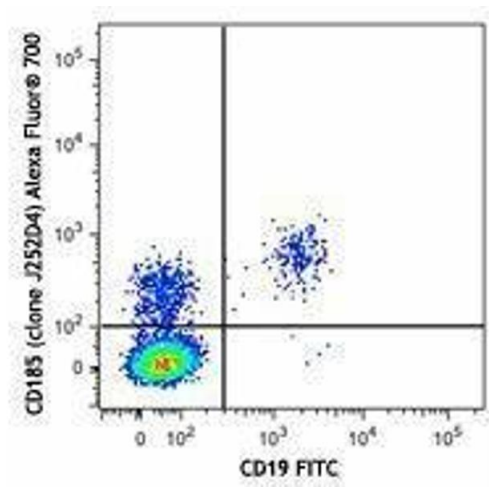
Target Details

Target:	CXCR5
Alternative Name:	CD185 (CXCR5 Products)
Background:	CD185, also known as CXCR5, is a 42 kD G-protein coupled receptor with seven transmembrane regions. CXCR5 is expressed by mature B cells, follicular helper T cells (TFH), Burkitt's lymphoma cells and a subset of neurons, and mediates cell migration to the B cell follicles in the secondary lymphoid organs. The ligand of CXCR5 is CXCL13 (BLC).

Application Details

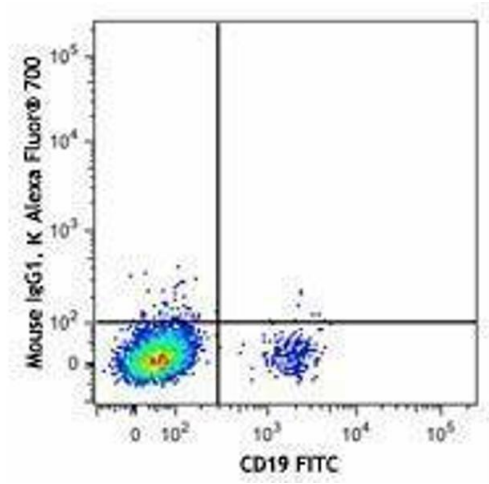
Application Notes:	Optimal working dilution should be determined by the investigator.
Restrictions:	For Research Use only
Handling	
Buffer:	Phosphate-buffered solution, pH 7.2, containing 0.09 % sodium azide and 0.2 % (w/v) BSA .
Preservative:	Sodium azide
Precaution of Use:	This product contains Sodium azide: a POISONOUS AND HAZARDOUS SUBSTANCE which should be handled by trained staff only.
Handling Advice:	Protect from prolonged exposure to light. Do not freeze.
Storage:	4 °C
Storage Comment:	The antibody solution should be stored undiluted between 2°C and 8°C

Images



Flow Cytometry

Image 1.



Flow Cytometry

Image 2.