



[Go to Product page](#)

Datasheet for ABIN2657468

## anti-CEACAM1/5/6 antibody (Alexa Fluor 488)

### 1 Image

#### Overview

Quantity:	100 tests
Target:	CEACAM1/5/6
Reactivity:	Human
Host:	Mouse
Clonality:	Monoclonal
Conjugate:	This CEACAM1/5/6 antibody is conjugated to Alexa Fluor 488
Application:	Flow Cytometry (FACS)

#### Product Details

Clone:	ASL-32
Isotype:	IgG2b kappa
Purification:	The antibody was purified by affinity chromatography, and conjugated with Alexa Fluor® 488 under optimal conditions.

#### Target Details

Target:	CEACAM1/5/6
Alternative Name:	CD66a/c/e ( <a href="#">CEACAM1/5/6 Products</a> )
Background:	The ASL-32 mAb reacts with an antigen epitope shared by CD66a, c and e. CD66a/c/e are members of the CEA (carcinoembryonic antigen) family of the Ig superfamily. CD66 plays a role in hemophilic and heterophilic adhesion. CD66a, also known as CEACAM1 and BGP (biliary glycoprotein), is mainly expressed on granulocytes, binds to CD66a, c, e, and CD62E. CD66c

## Target Details

(known as CEACAM6, NCA) is expressed on granulocytes and epithelial cells. The ligands of CD66c are CD66a-e, CD62E and Galectins. CD66e molecule is also called CEA or CEACAM5, and is primarily found on epithelial cells. CD66e binds to CD66a, c and e.

## Application Details

Application Notes: Optimal working dilution should be determined by the investigator.

Restrictions: For Research Use only

## Handling

Buffer: Phosphate-buffered solution, pH 7.2, containing 0.09 % sodium azide and 0.2 % (w/v) BSA .

Preservative: Sodium azide

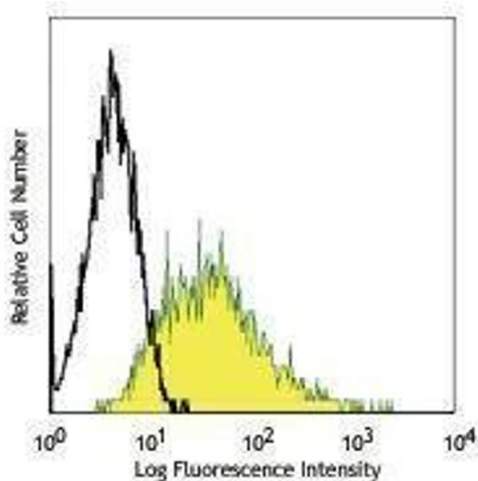
Precaution of Use: This product contains Sodium azide: a POISONOUS AND HAZARDOUS SUBSTANCE which should be handled by trained staff only.

Handling Advice: Protect from prolonged exposure to light. Do not freeze.

Storage: 4 °C

Storage Comment: The antibody solution should be stored undiluted between 2°C and 8°C

## Images



### Flow Cytometry

Image 1.