



[Go to Product page](#)

Datasheet for ABIN2657578

anti-SSEA-3 antibody (Alexa Fluor 488)

1 Image

Overview

Quantity:	100 tests
Target:	SSEA-3
Reactivity:	Human, Mouse
Host:	Rat
Clonality:	Monoclonal
Conjugate:	This SSEA-3 antibody is conjugated to Alexa Fluor 488
Application:	Flow Cytometry (FACS), Immunoprecipitation (IP), Blocking Reagent (BR), Co-Stimulation (CoSt)

Product Details

Clone:	MC-631
Isotype:	IgM kappa
Purification:	The antibody was purified by affinity chromatography, and conjugated with Alexa Fluor® 488 under optimal conditions.

Target Details

Target:	SSEA-3
Alternative Name:	SSEA-3 (SSEA-3 Products)
Background:	Stage-Specific Embryonic Antigen-3 (SSEA-3) is an internal core structure of glob-series glycolipids (R-Galβ 1-3GalNAcβ1-3Galα1-4Galβ1-R). SSEA-3 is expressed on human teratocarcinoma cells (EC), embryonic stemcells (ESC), embryonic germ cells (EG), and

Target Details

preimplantation embryos. The expression of SSEA-3 on human ESC is downregulated upon differentiation. SSEA-3 is also expressed by mouse on unfertilized eggs and preimplantation to early cleaved embryos.

Application Details

Application Notes: Optimal working dilution should be determined by the investigator.

Restrictions: For Research Use only

Handling

Buffer: Phosphate-buffered solution, pH 7.2, containing 0.09 % sodium azide and 0.2 % (w/v) BSA .

Preservative: Sodium azide

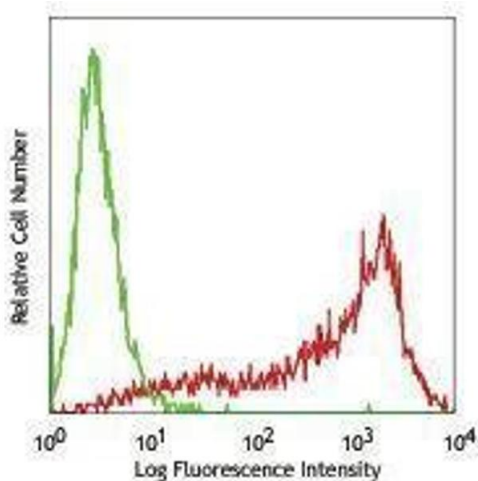
Precaution of Use: This product contains Sodium azide: a POISONOUS AND HAZARDOUS SUBSTANCE which should be handled by trained staff only.

Handling Advice: Protect from prolonged exposure to light. Do not freeze.

Storage: 4 °C

Storage Comment: The antibody solution should be stored undiluted between 2°C and 8°C

Images



Flow Cytometry

Image 1.