

Datasheet for ABIN2657593
anti-Basophils antibody (Alexa Fluor 647)



[Go to Product page](#)

1 Image

Overview

Quantity:	100 tests
Target:	Basophils
Reactivity:	Human
Host:	Mouse
Clonality:	Monoclonal
Conjugate:	This Basophils antibody is conjugated to Alexa Fluor 647
Application:	Flow Cytometry (FACS), Immunoprecipitation (IP)

Product Details

Clone:	Basophil-2D7
Isotype:	IgG1 kappa
Characteristics:	The Basophil/2D7 mAb specifically recognizes the human basophil population. The antigen that this antibody binds is present in cell granules but its identity is still unknown.
Purification:	The antibody was purified by affinity chromatography, and conjugated with Alexa Fluor® 647 under optimal conditions.

Target Details

Target:	Basophils
---------	-----------

Application Details

Application Notes:	Optimal working dilution should be determined by the investigator.
--------------------	--

Application Details

Restrictions: For Research Use only

Handling

Buffer: Phosphate-buffered solution, pH 7.2, containing 0.09 % sodium azide and 0.2 % (w/v) BSA .

Preservative: Sodium azide

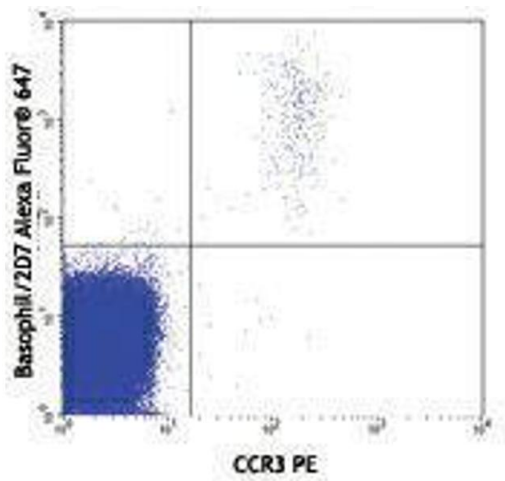
Precaution of Use: This product contains Sodium azide: a POISONOUS AND HAZARDOUS SUBSTANCE which should be handled by trained staff only.

Handling Advice: Protect from prolonged exposure to light. Do not freeze.

Storage: 4 °C

Storage Comment: The antibody solution should be stored undiluted between 2°C and 8°C

Images



Flow Cytometry

Image 1.