

Datasheet for ABIN2657640

anti-SLAMF1 antibody (Alexa Fluor 647)[Go to Product page](#)**2** Images

Overview

Quantity:	100 µg
Target:	SLAMF1
Reactivity:	Mouse
Host:	Rat
Clonality:	Monoclonal
Conjugate:	This SLAMF1 antibody is conjugated to Alexa Fluor 647
Application:	Western Blotting (WB), Flow Cytometry (FACS), Blocking Reagent (BR), Immunofluorescence (IF)

Product Details

Clone:	TC15-12F12-2
Isotype:	IgG2a lambda
Purification:	The antibody was purified by affinity chromatography, and conjugated with Alexa Fluor® 647 under optimal conditions.

Target Details

Target:	SLAMF1
Alternative Name:	CD150 (SLAMF1 Products)
Background:	CD150 is a 75-95 kD member of the immunoglobulin superfamily, also known as SLAM (signaling lymphocyte activation molecule) or IPO-3. CD150, a single chain type I transmembrane molecule, is expressed on thymocytes, T cell subsets, B cells, dendritic cells,

Target Details

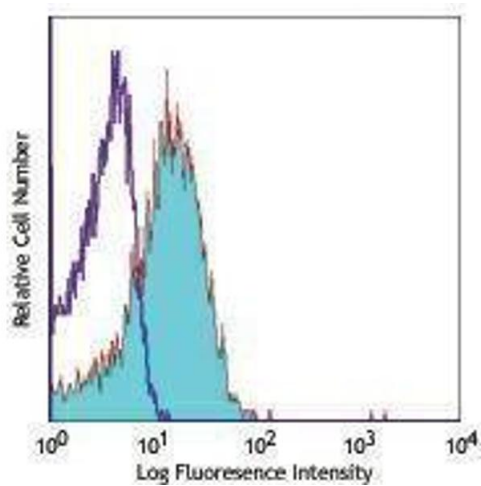
and endothelial cells. The expression is upregulated upon activation. CD150 expression has been shown to be maintained on Th1 but not Th2 clones. T regulatory cells express a relatively high level of CD150. Antibodies against CD150 have been shown to augment IFN- γ production by Th1 cells, especially when co-stimulated through the TCR. CD150 associates with the src homology 2-domain-containing protein tyrosine phosphatase SHP-2, and this association is thought to be involved in signal transduction. In combination with CD48, CD150 is a useful marker for hematopoietic stem cell studies.

Application Details

Application Notes:	Optimal working dilution should be determined by the investigator.
Restrictions:	For Research Use only

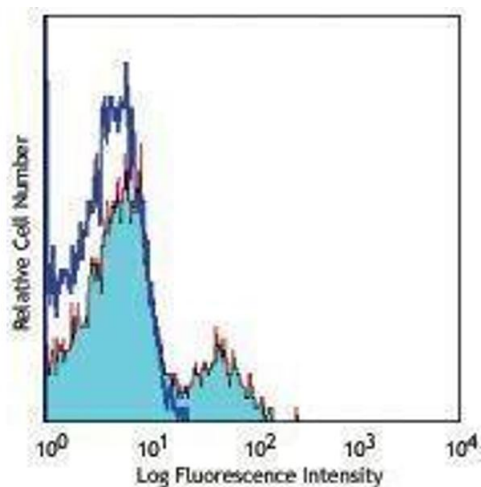
Handling

Concentration:	0.5 mg/mL
Buffer:	Phosphate-buffered solution, pH 7.2, containing 0.09 % sodium azide.
Preservative:	Sodium azide
Precaution of Use:	This product contains Sodium azide: a POISONOUS AND HAZARDOUS SUBSTANCE which should be handled by trained staff only.
Handling Advice:	Protect from prolonged exposure to light. Do not freeze.
Storage:	4 °C
Storage Comment:	The antibody solution should be stored undiluted between 2°C and 8°C



Flow Cytometry

Image 1.



Flow Cytometry

Image 2.