



[Go to Product page](#)

Datasheet for ABIN2657651

## anti-Sialoadhesin/CD169 antibody (Alexa Fluor 647)

### 2 Images

#### Overview

Quantity:	100 tests
Target:	Sialoadhesin/CD169 (SIGLEC1)
Reactivity:	Human
Host:	Mouse
Clonality:	Monoclonal
Conjugate:	This Sialoadhesin/CD169 antibody is conjugated to Alexa Fluor 647
Application:	ELISA

#### Product Details

Clone:	7-239
Isotype:	IgG1 kappa
Purification:	The antibody was purified by affinity chromatography, and conjugated with Alexa Fluor® 647 under optimal conditions.

#### Target Details

Target:	Sialoadhesin/CD169 (SIGLEC1)
Alternative Name:	CD169 ( <a href="#">SIGLEC1 Products</a> )
Background:	CD169, also known as Siglec-1 and Sialoadhesin (Sn), is a 210 kD type I single membrane-spanning glycoprotein. It is the largest member of the Siglec family, consisting of 1709 amino acids and belonging to the immunoglobulin superfamily. CD169 is expressed by macrophages and dendritic cells. By its affinity to $\alpha$ 2,3-linked sialic acid, it is involved in macrophage binding

## Target Details

to different cell types such as granulocytes, monocytes, NK, B and T cells. Several CD169 counter receptors, such as CD227 on human breast cancer cells, CD43 on T cells and CD206 on macrophages, have been reported.

## Application Details

Application Notes: Optimal working dilution should be determined by the investigator.

Restrictions: For Research Use only

## Handling

Buffer: Phosphate-buffered solution, pH 7.2, containing 0.09 % sodium azide and 0.2 % (w/v) BSA .

Preservative: Sodium azide

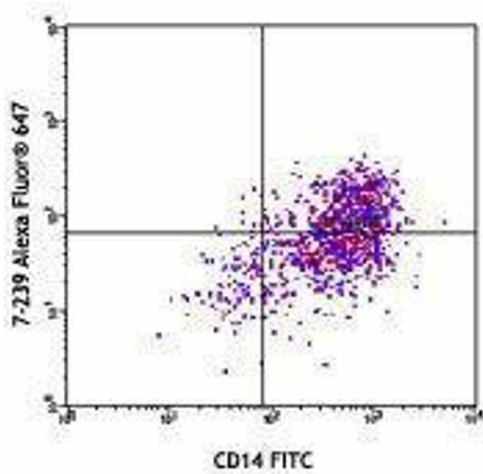
Precaution of Use: This product contains Sodium azide: a POISONOUS AND HAZARDOUS SUBSTANCE which should be handled by trained staff only.

Handling Advice: Protect from prolonged exposure to light. Do not freeze.

Storage: 4 °C

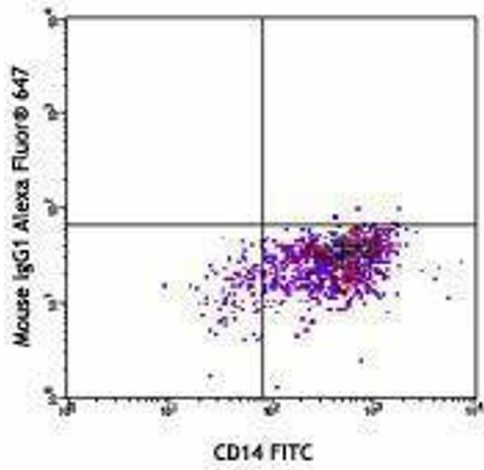
Storage Comment: The antibody solution should be stored undiluted between 2°C and 8°C

## Images



### Flow Cytometry

Image 1.



### Flow Cytometry

Image 2.