

Datasheet for ABIN2657706
anti-2B4 antibody (Alexa Fluor 647)



[Go to Product page](#)

2 Images

Overview

Quantity:	100 µg
Target:	2B4 (CD244)
Reactivity:	Mouse
Host:	Mouse
Clonality:	Monoclonal
Conjugate:	This 2B4 antibody is conjugated to Alexa Fluor 647
Application:	Flow Cytometry (FACS)

Product Details

Clone:	M2B4 (B6)458-1
Isotype:	IgG1 kappa
Purification:	The antibody was purified by affinity chromatography, and conjugated with Alexa Fluor® 647 under optimal conditions.

Target Details

Target:	2B4 (CD244)
Alternative Name:	CD244.2 (CD244 Products)
Background:	Mouse CD244, also known as 2B4, is a receptor belonging to the CD2 family of proteins involved in non- MHC-restricted cytotoxicity. It is expressed on all natural killer (NK) cells, IL-2 activated NK (LAK) cells, NKT cells, and a subset of T lymphocytes, including dendritic epidermal T cells. There are at least two isoforms of CD244.2 proteins that differ in the length

Target Details

of the cytoplasmic domain. The long form functions in an inhibitory manner, while the short form functions in an activating manner. The ligand of CD244 is CD48, which is expressed on all hematopoietic cells. It was reported that CD244 interaction with CD48 is essential for IL-2-driven expansion and activation of murine NK cells.

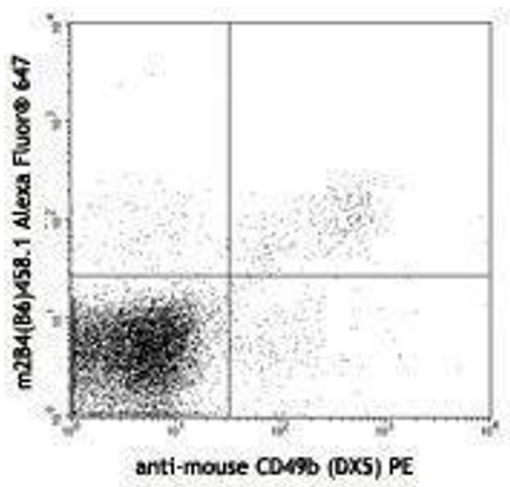
Application Details

Application Notes:	Optimal working dilution should be determined by the investigator.
Restrictions:	For Research Use only

Handling

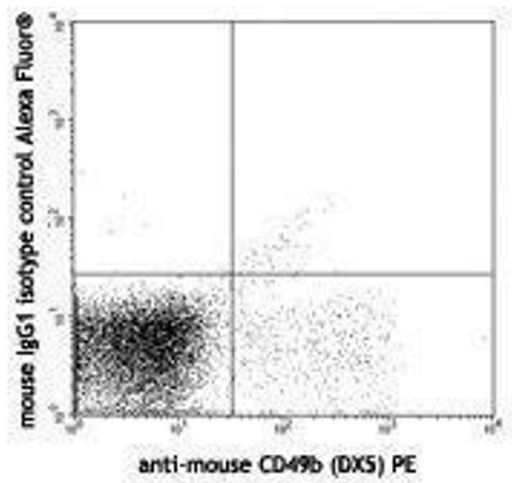
Concentration:	0.5 mg/mL
Buffer:	Phosphate-buffered solution, pH 7.2, containing 0.09 % sodium azide.
Preservative:	Sodium azide
Precaution of Use:	This product contains Sodium azide: a POISONOUS AND HAZARDOUS SUBSTANCE which should be handled by trained staff only.
Handling Advice:	Protect from prolonged exposure to light. Do not freeze.
Storage:	4 °C
Storage Comment:	The antibody solution should be stored undiluted between 2°C and 8°C

Images



Flow Cytometry

Image 1.



Flow Cytometry

Image 2.