

Datasheet for ABIN2657731

anti-Prostaglandin D2 Receptor 2 (PTGDR2) antibody (Alexa Fluor 647)[Go to Product page](#)**3** Images

Overview

Quantity:	100 tests
Target:	Prostaglandin D2 Receptor 2 (PTGDR2)
Reactivity:	Human
Host:	Rat
Clonality:	Monoclonal
Conjugate:	Alexa Fluor 647
Application:	ELISA

Product Details

Clone:	BM16
Isotype:	IgG2a kappa
Purification:	The antibody was purified by affinity chromatography, and conjugated with Alexa Fluor® 647 under optimal conditions.

Target Details

Target:	Prostaglandin D2 Receptor 2 (PTGDR2)
Alternative Name:	CD294 (PTGDR2 Products)
Background:	CD294, also known as CRTH2, is a seven-transmembrane protein coupled with heterotrimeric G proteins. CRTH2 is the prostaglandin D2 receptor and is expressed by Th2 cells, eosinophils, and basophils. CD294 prevents the apoptosis of Th2 cells and mediates the chemotaxis of CRTH2 expressing cells to the sites of allergic inflammation, such as the asthmatic lung.

Target Details

Pathways: [Regulation of G-Protein Coupled Receptor Protein Signaling](#)

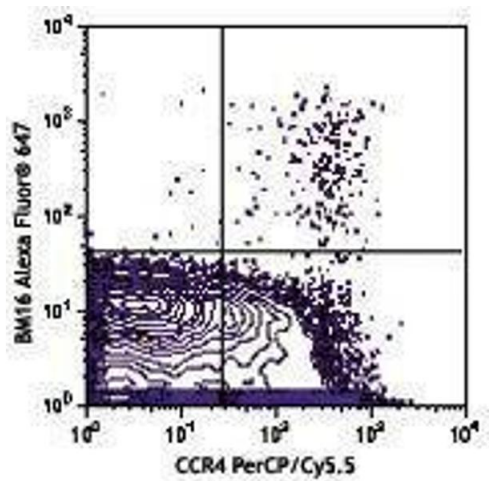
Application Details

Application Notes:	Optimal working dilution should be determined by the investigator.
Restrictions:	For Research Use only

Handling

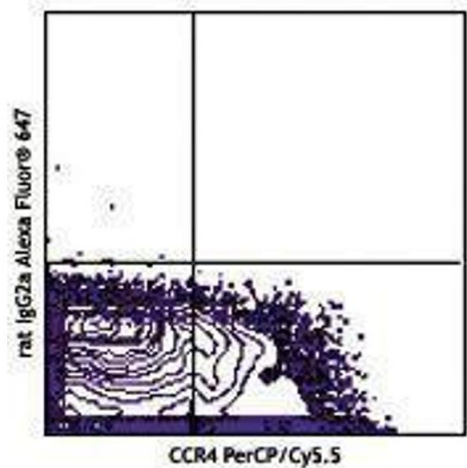
Buffer:	Phosphate-buffered solution, pH 7.2, containing 0.09 % sodium azide and 0.2 % (w/v) BSA .
Preservative:	Sodium azide
Precaution of Use:	This product contains Sodium azide: a POISONOUS AND HAZARDOUS SUBSTANCE which should be handled by trained staff only.
Handling Advice:	Protect from prolonged exposure to light. Do not freeze.
Storage:	4 °C
Storage Comment:	The antibody solution should be stored undiluted between 2°C and 8°C

Images



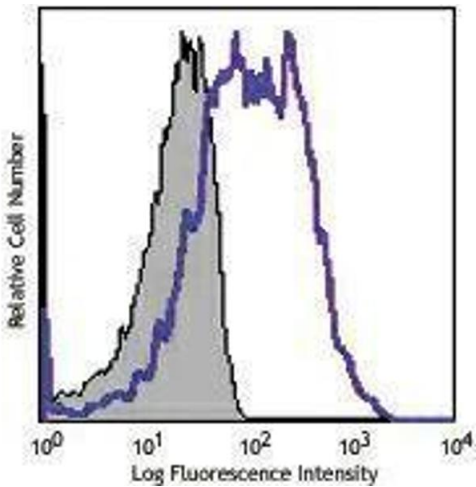
Flow Cytometry

Image 1.



Flow Cytometry

Image 2.



Flow Cytometry

Image 3.