

Datasheet for ABIN2657954

anti-IL-21 antibody (Alexa Fluor 647)[Go to Product page](#)**2** Images

Overview

Quantity:	100 tests
Target:	IL-21 (IL21)
Reactivity:	Human
Host:	Mouse
Clonality:	Monoclonal
Conjugate:	This IL-21 antibody is conjugated to Alexa Fluor 647
Application:	Flow Cytometry (FACS)

Product Details

Clone:	3A3-N2
Isotype:	IgG1 kappa
Cross-Reactivity:	Rhesus Monkey
Purification:	The antibody was purified by affinity chromatography, and conjugated with Alexa Fluor® 647 under optimal conditions.

Target Details

Target:	IL-21 (IL21)
Alternative Name:	IL-21 (IL21 Products)
Background:	Interleukin 21 (IL-21) is a potent immunomodulatory cytokine mainly produced by NKT and CD4+ T-cells, particularly the inflammatory Th17 subset, and has pleiotropic effects on both innate and adaptive immune responses. These actions include positive effects such as

Target Details

enhancing proliferation of NK cells and cytotoxic T cells, and inhibitory effects on the antigen-presenting function of dendritic cells. It can also be proapoptotic for B cells and NK cells. Studies have shown that IL-21 is also an autocrine cytokine that potently induces Th17 differentiation, suppresses Foxp3 expression, and serves as a target for treating inflammatory diseases.

Pathways: [JAK-STAT Signaling](#), [Regulation of Leukocyte Mediated Immunity](#), [Positive Regulation of Immune Effector Process](#), [Production of Molecular Mediator of Immune Response](#)

Application Details

Application Notes: Optimal working dilution should be determined by the investigator.

Restrictions: For Research Use only

Handling

Buffer: Phosphate-buffered solution, pH 7.2, containing 0.09 % sodium azide and 0.2 % (w/v) BSA .

Preservative: Sodium azide

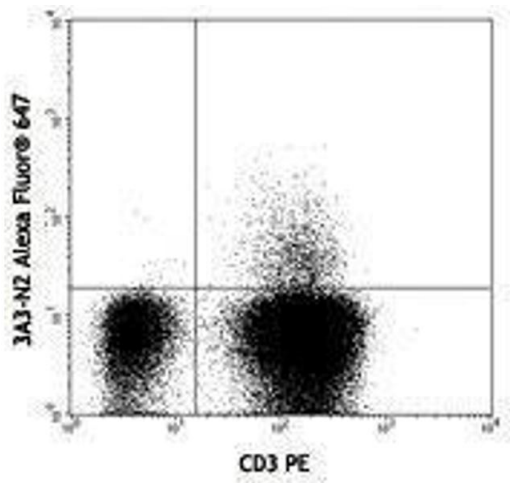
Precaution of Use: This product contains Sodium azide: a POISONOUS AND HAZARDOUS SUBSTANCE which should be handled by trained staff only.

Handling Advice: Protect from prolonged exposure to light. Do not freeze.

Storage: 4 °C

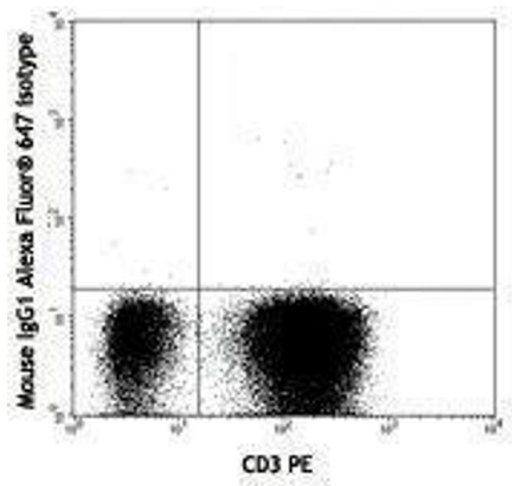
Storage Comment: The antibody solution should be stored undiluted between 2°C and 8°C

Images



Flow Cytometry

Image 1.



Flow Cytometry

Image 2.