

Datasheet for ABIN2657967  
**anti-JAML antibody (Alexa Fluor 647)**

## 2 Images

[Go to Product page](#)

## Overview

Quantity:	100 µg
Target:	JAML (AMICA1)
Reactivity:	Mouse
Host:	Armenian Hamster
Clonality:	Monoclonal
Conjugate:	This JAML antibody is conjugated to Alexa Fluor 647
Application:	Flow Cytometry (FACS)

## Product Details

Clone:	4E10
Isotype:	IgG
Purification:	The antibody was purified by affinity chromatography, and conjugated with Alexa Fluor® 647 under optimal conditions.

## Target Details

Target:	JAML (AMICA1)
Alternative Name:	JAML ( <a href="#">AMICA1 Products</a> )
Background:	JAML is a type I integral transmembrane protein with 2 extracellular IgSF domains characteristic of many proteins implicated in cell to cell interactions. JAML is primarily expressed on granulocytes and reported to be involved in neutrophil migration across tight junctions by its adhesive interaction with epithelial Coxsackie and adenovirus receptor (CAR).

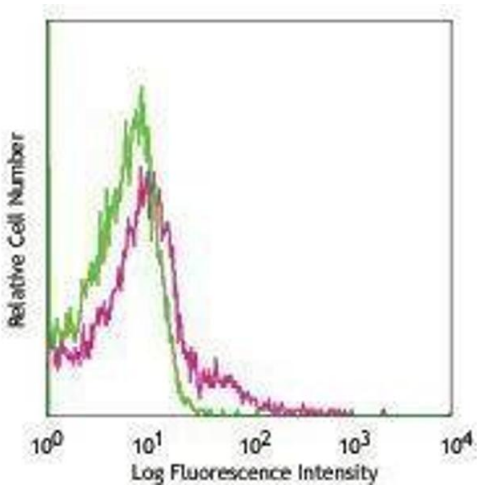
## Application Details

Application Notes:	Optimal working dilution should be determined by the investigator.
Restrictions:	For Research Use only

## Handling

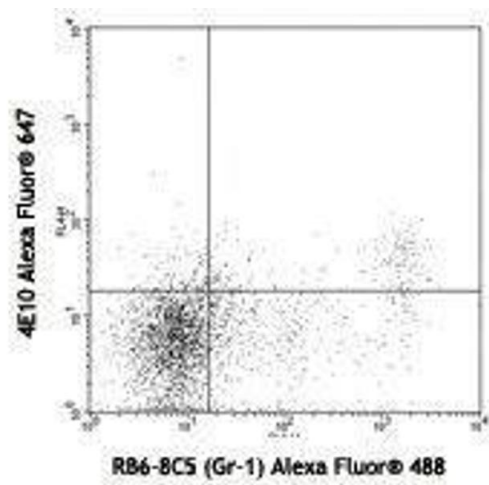
Concentration:	0.5 mg/mL
Buffer:	Phosphate-buffered solution, pH 7.2, containing 0.09 % sodium azide.
Preservative:	Sodium azide
Precaution of Use:	This product contains Sodium azide: a POISONOUS AND HAZARDOUS SUBSTANCE which should be handled by trained staff only.
Handling Advice:	Protect from prolonged exposure to light. Do not freeze.
Storage:	4 °C
Storage Comment:	The antibody solution should be stored undiluted between 2°C and 8°C

## Images



### Flow Cytometry

Image 1.



## Flow Cytometry

Image 2.