

Datasheet for ABIN2657998
anti-Raet1c antibody (Alexa Fluor 647)[Go to Product page](#)

1 Image

Overview

Quantity:	100 µg
Target:	Raet1c
Reactivity:	Mouse
Host:	Rat
Clonality:	Monoclonal
Conjugate:	This Raet1c antibody is conjugated to Alexa Fluor 647
Application:	Flow Cytometry (FACS), Immunoprecipitation (IP), Immunohistochemistry (IHC)

Product Details

Clone:	CX1
Isotype:	IgG2b kappa
Purification:	The antibody was purified by affinity chromatography, and conjugated with Alexa Fluor® 647 under optimal conditions.

Target Details

Target:	Raet1c
Alternative Name:	RAE-1gamma (Raet1c Products)
Background:	RAE-1 gamma is one of the five member RAE-family. Together with H60 they were identified as ligands for the mouse NKG2D molecules. Expression of RAE-1 is low or absent in normal adult tissue, but can be upregulated by retinoid acid and constitutively expressed on some tumors. This antibody has weak crossreactivity with RAE-1 alpha and RAE-1 beta.

Target Details

Pathways: [Cellular Response to Molecule of Bacterial Origin](#)

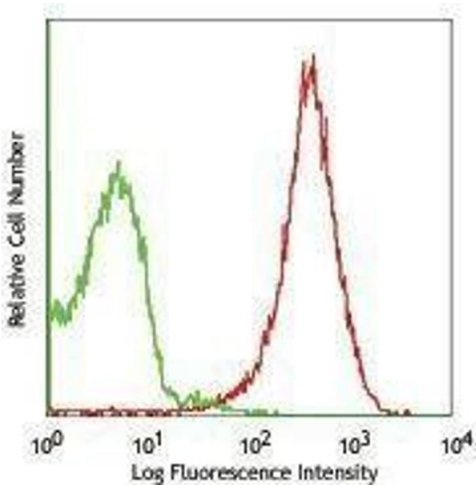
Application Details

Application Notes:	Optimal working dilution should be determined by the investigator.
Restrictions:	For Research Use only

Handling

Concentration:	0.5 mg/mL
Buffer:	Phosphate-buffered solution, pH 7.2, containing 0.09 % sodium azide.
Preservative:	Sodium azide
Precaution of Use:	This product contains Sodium azide: a POISONOUS AND HAZARDOUS SUBSTANCE which should be handled by trained staff only.
Handling Advice:	Protect from prolonged exposure to light. Do not freeze.
Storage:	4 °C
Storage Comment:	The antibody solution should be stored undiluted between 2°C and 8°C

Images



Flow Cytometry

Image 1.