

Datasheet for ABIN2657999

anti-CCL5 antibody (Alexa Fluor 647)**2** Images[Go to Product page](#)

Overview

Quantity:	100 tests
Target:	CCL5
Reactivity:	Human
Host:	Mouse
Clonality:	Monoclonal
Conjugate:	This CCL5 antibody is conjugated to Alexa Fluor 647
Application:	Flow Cytometry (FACS)

Product Details

Clone:	VL1
Isotype:	IgG2b kappa
Cross-Reactivity:	Rhesus Monkey
Purification:	The antibody was purified by affinity chromatography, and conjugated with Alexa Fluor® 647 under optimal conditions.

Target Details

Target:	CCL5
Alternative Name:	RANTES (CCL5 Products)
Background:	RANTES (CCL5) is a member of the CC chemokine family. Its mature form consists of 68 amino acid residues. RANTES is a strong chemotractant for monocytes, NK cells, T cells, and eosinophils. RANTES may have important role in mediating immune and inflammatory

Target Details

	responses.
Pathways:	Cellular Response to Molecule of Bacterial Origin , Regulation of G-Protein Coupled Receptor Protein Signaling , Smooth Muscle Cell Migration

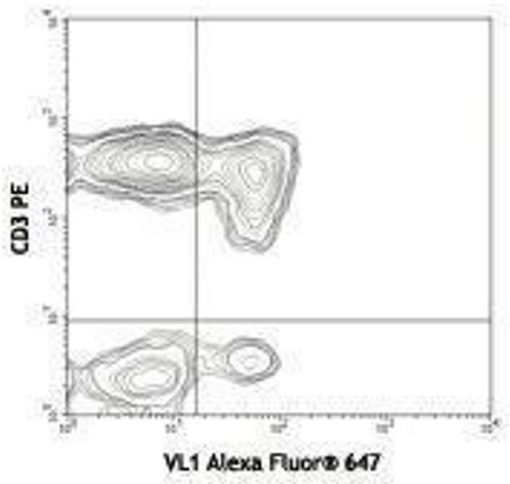
Application Details

Application Notes:	Optimal working dilution should be determined by the investigator.
Restrictions:	For Research Use only

Handling

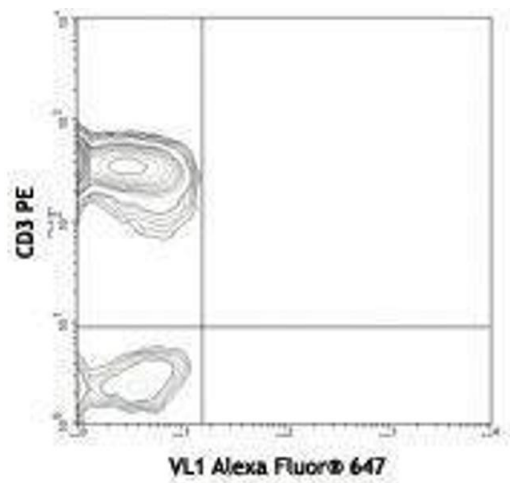
Buffer:	Phosphate-buffered solution, pH 7.2, containing 0.09 % sodium azide and 0.2 % (w/v) BSA .
Preservative:	Sodium azide
Precaution of Use:	This product contains Sodium azide: a POISONOUS AND HAZARDOUS SUBSTANCE which should be handled by trained staff only.
Handling Advice:	Protect from prolonged exposure to light. Do not freeze.
Storage:	4 °C
Storage Comment:	The antibody solution should be stored undiluted between 2°C and 8°C

Images



Flow Cytometry

Image 1.



Flow Cytometry

Image 2.