

Datasheet for ABIN2658220
anti-CLEC12A antibody (APC)[Go to Product page](#)

2 Images

Overview

Quantity:	100 µg
Target:	CLEC12A
Reactivity:	Mouse
Host:	Rat
Clonality:	Monoclonal
Conjugate:	This CLEC12A antibody is conjugated to APC
Application:	Flow Cytometry (FACS)

Product Details

Clone:	5D3-CLEC12A
Isotype:	IgG2a kappa
Purification:	The antibody was purified by affinity chromatography and conjugated with APC under optimal conditions. The solution is free of unconjugated APC and unconjugated antibody.

Target Details

Target:	CLEC12A
Alternative Name:	CD371 (CLEC12A Products)
Background:	CD371 (CLEC12A), also known as DCAL-2, MICL or CLL-1, is a 30 kD type II transmembrane protein with extracellular C-type lectin domains, belonging to the C-type lectin family. Its cytoplasmic ITIM motif modulates signaling cascades and is involved in phosphorylation of tyrosine residues in MAP kinases. Mouse CLEC12A is expressed on CD8 + dendritic cells (DCs),

Target Details

a proportion of CD8- dendritic cells, plasmacytoid DCs, monocytes, macrophages, granulocytes, and B cells.

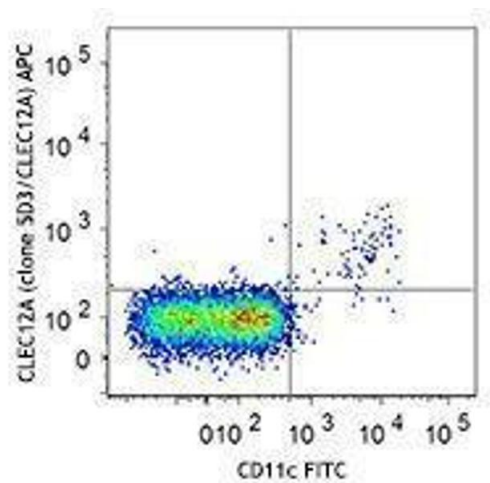
Application Details

Application Notes:	Optimal working dilution should be determined by the investigator.
Restrictions:	For Research Use only

Handling

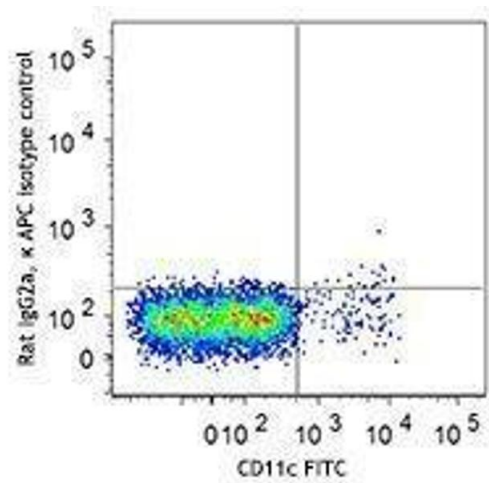
Concentration:	0.2 mg/mL
Buffer:	Phosphate-buffered solution, pH 7.2, containing 0.09 % sodium azide.
Preservative:	Sodium azide
Precaution of Use:	This product contains Sodium azide: a POISONOUS AND HAZARDOUS SUBSTANCE which should be handled by trained staff only.
Handling Advice:	Protect from prolonged exposure to light. Do not freeze.
Storage:	4 °C
Storage Comment:	The antibody solution should be stored undiluted between 2°C and 8°C.

Images



Flow Cytometry

Image 1.



Flow Cytometry

Image 2.