



[Go to Product page](#)

Datasheet for ABIN2658228

anti-CD41, CD61 antibody (APC)

1 Image

Overview

Quantity:	100 tests
Target:	CD41, CD61
Reactivity:	Human
Host:	Mouse
Clonality:	Monoclonal
Conjugate:	This CD41, CD61 antibody is conjugated to APC
Application:	Flow Cytometry (FACS)

Product Details

Clone:	A2A9-6
Isotype:	IgG2a kappa
Purification:	The antibody was purified by affinity chromatography and conjugated with APC under optimal conditions. The solution is free of unconjugated APC and unconjugated antibody.

Target Details

Target:	CD41, CD61
Alternative Name:	CD41/CD61 (CD41, CD61 Products)
Background:	CD41/CD61, also known as α IIb/IIIa, is a member of a family integrin receptors. This is a complex comprised by CD41 and CD61 through non-covalent association. CD41/CD61 is mainly expressed by platelets and megakaryocytes. The resting form of the CD41/CD61 complex is involved in platelet activation and aggregation by binding to immobilized fibrinogen.

Target Details

After activation, CD41/CD61 becomes a receptor for soluble fibrinogen and several other RGD-containing adhesive proteins such as von Willebrand Factor (vWF) and fibronectin. An absence or dysfunction of CD41/CD61 on the platelet surface results in an inherited bleeding disorder, called Glanzmann Thrombasthenia (GT). CD41/CD61 has been found on murine hematopoietic progenitor cells, indicating that this complex may play a role in regulating hematopoietic development.

Application Details

Application Notes: Optimal working dilution should be determined by the investigator.

Restrictions: For Research Use only

Handling

Buffer: Phosphate-buffered solution, pH 7.2, containing 0.09 % sodium azide and 0.2 % (w/v) BSA .

Preservative: Sodium azide

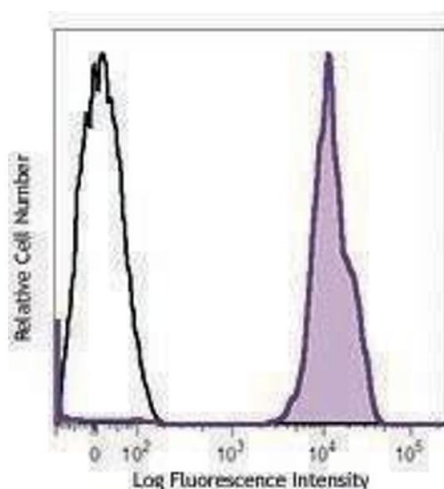
Precaution of Use: This product contains Sodium azide: a POISONOUS AND HAZARDOUS SUBSTANCE which should be handled by trained staff only.

Handling Advice: Protect from prolonged exposure to light. Do not freeze.

Storage: 4 °C

Storage Comment: The antibody solution should be stored undiluted between 2°C and 8°C.

Images



Flow Cytometry

Image 1.