



Datasheet for ABIN2658230 anti-GP5 antibody (APC)



[Go to Product page](#)

1 Image

Overview

Quantity:	100 µg
Target:	GP5
Reactivity:	Mouse, Rat
Host:	Armenian Hamster
Clonality:	Monoclonal
Conjugate:	This GP5 antibody is conjugated to APC
Application:	Intracellular Flow Cytometry (ICFC)

Product Details

Clone:	1C2
Isotype:	IgG
Purification:	The antibody was purified by affinity chromatography and conjugated with APC under optimal conditions. The solution is free of unconjugated APC and unconjugated antibody.

Target Details

Target:	GP5
Alternative Name:	CD42d (GP5 Products)
Background:	CD42d is an 83 kD surface glycoprotein that non-covalently associates with GPIb and GPIIX to form a receptor complex for von Willebrand factor on megakaryocytes and resting platelets. Binding sites for von Willebrand factor and thrombin have been localized to the GPIba chain of the GPI-b-V-IX complex. Platelet activation with thrombin cleaves the GPI-b-V-IX complex to

Target Details

release a 69 kD soluble fragment. Presence of the GPI-b-V-IX complex is important in Bernard-Soulier syndrome, a rare bleeding disorder.

Application Details

Application Notes: Optimal working dilution should be determined by the investigator.

Restrictions: For Research Use only

Handling

Concentration: 0.2 mg/mL

Buffer: Phosphate-buffered solution, pH 7.2, containing 0.09 % sodium azide.

Preservative: Sodium azide

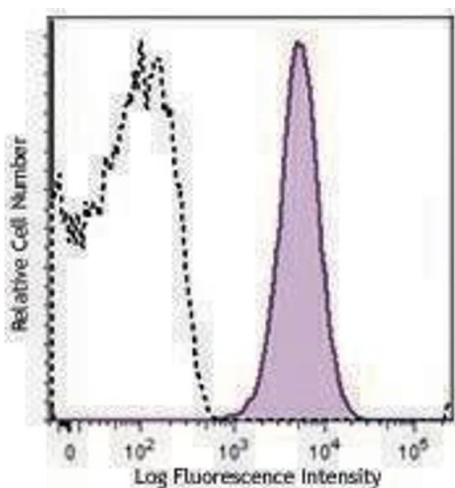
Precaution of Use: This product contains Sodium azide: a POISONOUS AND HAZARDOUS SUBSTANCE which should be handled by trained staff only.

Handling Advice: Protect from prolonged exposure to light. Do not freeze.

Storage: 4 °C

Storage Comment: The antibody solution should be stored undiluted between 2°C and 8°C.

Images



Flow Cytometry

Image 1.