

Datasheet for ABIN2658389
anti-SIGLEC8 antibody (APC)[Go to Product page](#)

2 Images

Overview

Quantity:	100 tests
Target:	SIGLEC8
Reactivity:	Human
Host:	Mouse
Clonality:	Monoclonal
Conjugate:	This SIGLEC8 antibody is conjugated to APC
Application:	Flow Cytometry (FACS), Intracellular Flow Cytometry (ICFC)

Product Details

Clone:	7C9
Isotype:	IgG1 kappa
Purification:	The antibody was purified by affinity chromatography and conjugated with APC under optimal conditions. The solution is free of unconjugated APC and unconjugated antibody.

Target Details

Target:	SIGLEC8
Alternative Name:	Siglec-8 (SIGLEC8 Products)
Background:	Siglec-8 is a lectin specific for 6'-sulfo-sLex and a member of the Ig-superfamily. It is expressed almost exclusively in eosinophils, however, basophils and mast cells can express it to a lower degree. Siglec-8 is a 54 kD transmembranal protein, the extracellular domain has one V-set Ig-like domain and two C2-set domains. The cytoplasmic domain has two immunoreceptor

Target Details

tyrosine-based inhibitor motifs (ITIM) that recruit SH2-family phosphatases after tyrosine phosphorylation. There are reports that siglec-8 inhibits the release of histamine and prostaglandin D2 mediated by the IgEFcR. This molecule is also involved in the induction of apoptosis.

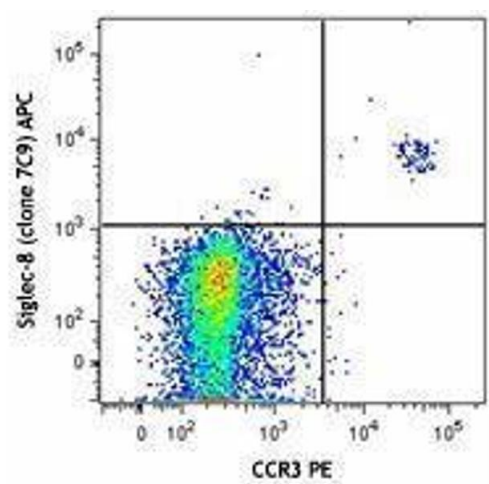
Application Details

Application Notes:	Optimal working dilution should be determined by the investigator.
Restrictions:	For Research Use only

Handling

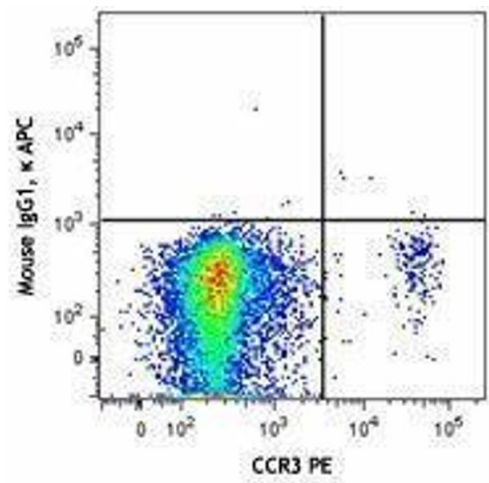
Buffer:	Phosphate-buffered solution, pH 7.2, containing 0.09 % sodium azide and 0.2 % (w/v) BSA .
Preservative:	Sodium azide
Precaution of Use:	This product contains Sodium azide: a POISONOUS AND HAZARDOUS SUBSTANCE which should be handled by trained staff only.
Handling Advice:	Protect from prolonged exposure to light. Do not freeze.
Storage:	4 °C
Storage Comment:	The antibody solution should be stored undiluted between 2°C and 8°C.

Images



Flow Cytometry

Image 1.



Flow Cytometry

Image 2.