

Datasheet for ABIN2658821
anti-Siglec H antibody (APC)

2 Images

[Go to Product page](#)

Overview

Quantity:	100 µg
Target:	Siglec H
Reactivity:	Mouse
Host:	Rat
Clonality:	Monoclonal
Conjugate:	This Siglec H antibody is conjugated to APC
Application:	Flow Cytometry (FACS), Immunofluorescence (IF)

Product Details

Clone:	551
Isotype:	IgG1, IgG1 kappa
Characteristics:	The Siglec-H is a member of CD33-related Siglec family which mostly expressed in the innate immune system. Siglec-H is reported to be specifically expressed on plasmacytoid dendritic cells. Siglec-H depends on adaptor protein DAP 12 (DNAX-activating protein of 12 kD) for surface expression and signal transduction. Cross-linking with this antibody can selectively inhibit interferon-alpha production by IPCs following TLR9 ligation.
Purification:	The antibody was purified by affinity chromatography, and conjugated with APC under optimal conditions. The solution is free of unconjugated APC and unconjugated antibody.

Target Details

Target:	Siglec H
---------	----------

Target Details

Abstract: [Siglec H Products](#)

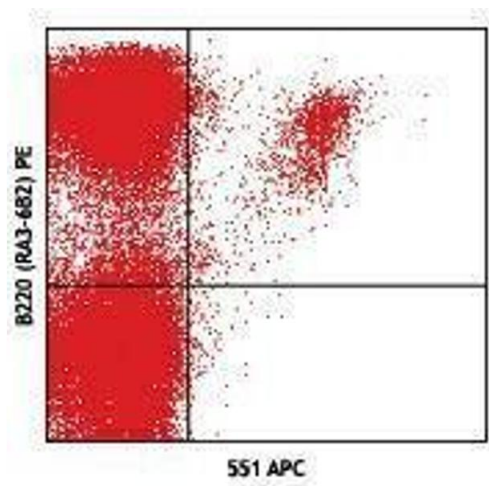
Application Details

Application Notes:	Optimal working dilution should be determined by the investigator.
Restrictions:	For Research Use only

Handling

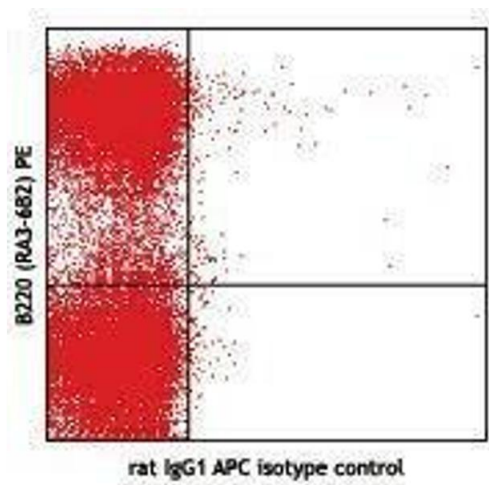
Concentration:	0.2 mg/mL
Buffer:	Phosphate-buffered solution, pH 7.2, containing 0.09 % sodium azide.
Preservative:	Sodium azide
Precaution of Use:	This product contains Sodium azide: a POISONOUS AND HAZARDOUS SUBSTANCE which should be handled by trained staff only.
Handling Advice:	Protect from prolonged exposure to light. Do not freeze.
Storage:	4 °C
Storage Comment:	The antibody solution should be stored undiluted between 2°C and 8°C.

Images



Flow Cytometry

Image 1.



Flow Cytometry

Image 2.