



Datasheet for ABIN2659118
anti-KIR3DL1 antibody (PE-Cy7)



[Go to Product page](#)

2 Images

Overview

Quantity:	100 tests
Target:	KIR3DL1
Reactivity:	Human
Host:	Mouse
Clonality:	Monoclonal
Conjugate:	This KIR3DL1 antibody is conjugated to PE-Cy7
Application:	Flow Cytometry (FACS)

Product Details

Clone:	DX9
Isotype:	IgG1 kappa
Purification:	The antibody was purified by affinity chromatography and conjugated with PE/Cy7 under optimal conditions. The solution is free of unconjugated PE/Cy7 and unconjugated antibody.

Target Details

Target:	KIR3DL1
Alternative Name:	CD158e1 (KIR3DL1 Products)
Background:	CD158e1, also known as NKB1, is a 70 kD member of the immunoglobulin superfamily that is expressed on a subset of natural killer cells and T cells at varying levels among individuals. NKB1 is a type I membrane protein containing two immunoglobulin C2-type domains. The interaction of NKB1 with specific HLA-B antigens on a target cell (the HLA-Bw4 allele, for

Target Details

example) inhibits cytotoxicity and prevents target cell lysis and death. The interactions between KIR and MHC class I are thought to be important in NK and T cell regulation following antigen stimulation. The absence of ligands for KIRs may lower the threshold for activation through activating receptors and increase inflammation and susceptibility to autoimmune disease.

Application Details

Application Notes: Optimal working dilution should be determined by the investigator.

Restrictions: For Research Use only

Handling

Buffer: Phosphate-buffered solution, pH 7.2, containing 0.09 % sodium azide and 0.2 % (w/v) BSA .

Preservative: Sodium azide

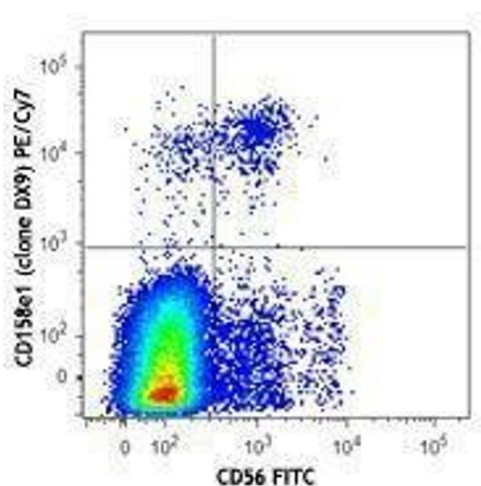
Precaution of Use: This product contains Sodium azide: a POISONOUS AND HAZARDOUS SUBSTANCE which should be handled by trained staff only.

Handling Advice: Protect from prolonged exposure to light. Do not freeze.

Storage: 4 °C

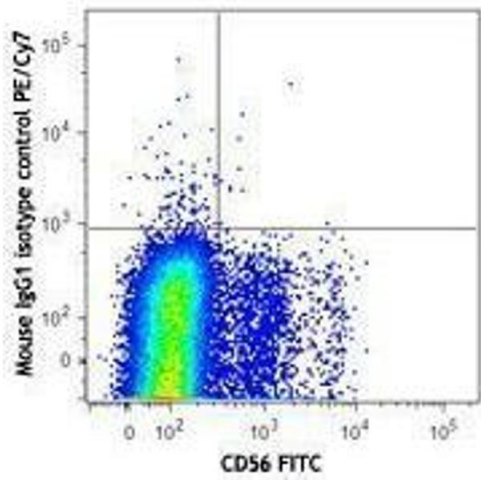
Storage Comment: The antibody solution should be stored undiluted between 2°C and 8°C.

Images



Flow Cytometry

Image 1.



Flow Cytometry

Image 2.