

Datasheet for ABIN2659130

anti-Sialoadhesin/CD169 antibody (PE-Cy7)



[Go to Product page](#)

2 Images

Overview

Quantity:	100 µg
Target:	Sialoadhesin/CD169 (SIGLEC1)
Reactivity:	Mouse
Host:	Rat
Clonality:	Monoclonal
Conjugate:	This Sialoadhesin/CD169 antibody is conjugated to PE-Cy7
Application:	Flow Cytometry (FACS), Western Blotting (WB), Immunoprecipitation (IP)

Product Details

Clone:	3D6-112
Isotype:	IgG2a kappa
Purification:	The antibody was purified by affinity chromatography and conjugated with PE/Cy7 under optimal conditions. The solution is free of unconjugated PE/Cy7 and unconjugated antibody.

Target Details

Target:	Sialoadhesin/CD169 (SIGLEC1)
Alternative Name:	CD169 (SIGLEC1 Products)
Background:	CD169, also known as Siglec-1 and Sialoadhesin (Sn), is a type I lectin containing 17 immunoglobulin (Ig) domains (one variable domain and 16 constant domains). CD169 binds to sialic acids, which can be found on PSGL-1, CD43, CD206, and CD227. By its affinity to α2, 3-linked sialic acid, it is involved in macrophage binding to different cell types such as

Target Details

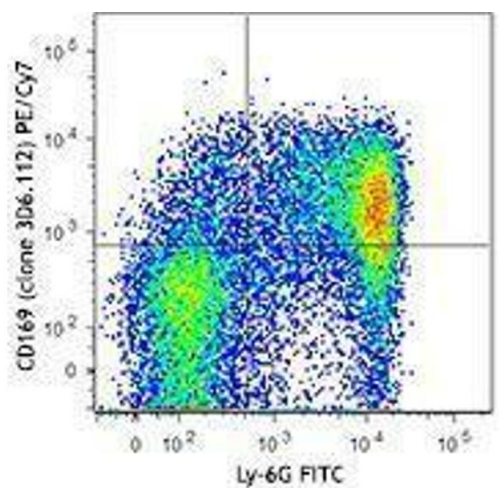
granulocytes, monocytes, NK, B, and T cells. CD169 was initially identified as a sialic acid-dependent sheep erythrocyte receptor (SER) on resident bone marrow cells of mice. It has been identified as highly expressed on resident bone marrow macrophages which plays an important role in retention of stem cells in mesenchymal stem cell niche. It is also found on some specific subsets of tissue macrophages in spleen, lymph nodes, bone marrow, liver, colon, lungs, and cancer cells. Evidence suggest that CD169-positive macrophages serve as lymph node-resident APCs to dominate early activation of tumor antigen-specific CD8-positive cells and invariant NK cell.

Application Details

Application Notes:	Optimal working dilution should be determined by the investigator.
Restrictions:	For Research Use only

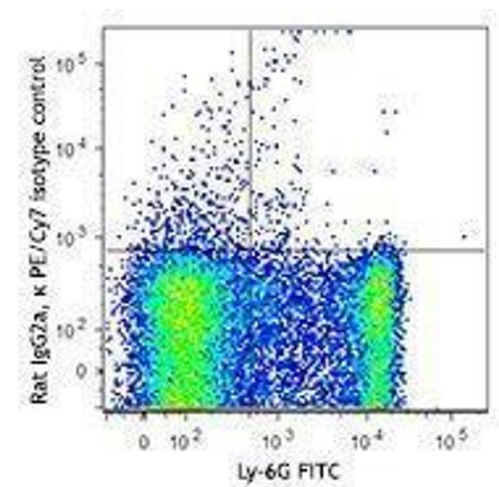
Handling

Concentration:	0.2 mg/mL
Buffer:	Phosphate-buffered solution, pH 7.2, containing 0.09 % sodium azide.
Preservative:	Sodium azide
Precaution of Use:	This product contains Sodium azide: a POISONOUS AND HAZARDOUS SUBSTANCE which should be handled by trained staff only.
Handling Advice:	Protect from prolonged exposure to light. Do not freeze.
Storage:	4 °C
Storage Comment:	The antibody solution should be stored undiluted between 2°C and 8°C.



Flow Cytometry

Image 1.



Flow Cytometry

Image 2.