



[Go to Product page](#)

Datasheet for ABIN2659455
anti-CCR6 antibody (PE-Cy7)

2 Images

Overview

Quantity:	100 µg
Target:	CCR6
Reactivity:	Mouse
Host:	Armenian Hamster
Clonality:	Monoclonal
Conjugate:	This CCR6 antibody is conjugated to PE-Cy7
Application:	Immunoprecipitation (IP), Intracellular Flow Cytometry (ICFC), Immunofluorescence (IF), Immunocytochemistry (ICC)

Product Details

Clone:	29-2L17
Isotype:	IgG
Purification:	The antibody was purified by affinity chromatography, and conjugated with PE/Cy7 under optimal conditions. The solution is free of unconjugated PE/Cy7 and unconjugated antibody.

Target Details

Target:	CCR6
Alternative Name:	CD196 (CCR6 Products)
Background:	CCR6 is a G-protein linked chemokine receptor which binds the chemokine CCL20/MIP-3a. It is expressed on B lymphocytes and certain subsets of dendritic cells and T cells. CCR6 is reported to be involved in mucosal immune response and lymphocyte migration and homeostasis.

Target Details

Pathways: [cAMP Metabolic Process](#)

Application Details

Application Notes: Optimal working dilution should be determined by the investigator.

Restrictions: For Research Use only

Handling

Concentration: 0.2 mg/mL

Buffer: Phosphate-buffered solution, pH 7.2, containing 0.09 % sodium azide.

Preservative: Sodium azide

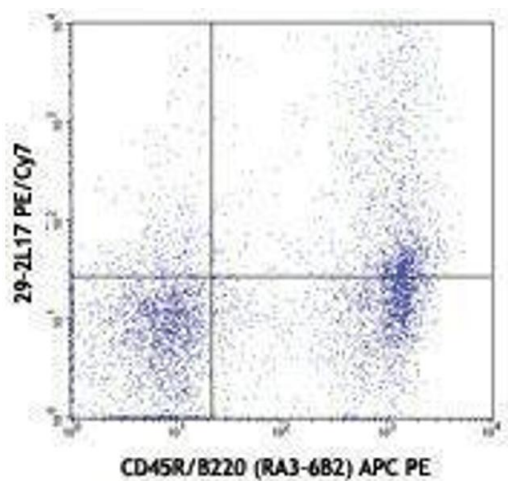
Precaution of Use: This product contains Sodium azide: a POISONOUS AND HAZARDOUS SUBSTANCE which should be handled by trained staff only.

Handling Advice: Protect from prolonged exposure to light. Do not freeze.

Storage: 4 °C

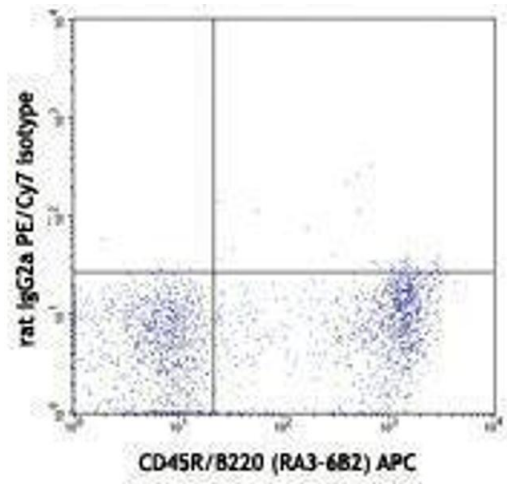
Storage Comment: The antibody solution should be stored undiluted between 2°C and 8°C.

Images



Flow Cytometry

Image 1.



Flow Cytometry

Image 2.