

Datasheet for ABIN2659504
anti-CD39 antibody (PE-Cy7)



[Go to Product page](#)

2 Images

Overview

Quantity:	100 tests
Target:	CD39 (ENTPD1)
Reactivity:	Human
Host:	Mouse
Clonality:	Monoclonal
Conjugate:	This CD39 antibody is conjugated to PE-Cy7
Application:	Flow Cytometry (FACS), Immunofluorescence (IF)

Product Details

Clone:	A1
Isotype:	IgG1 kappa
Cross-Reactivity:	Rhesus Monkey
Purification:	The antibody was purified by affinity chromatography, and conjugated with PE/Cy7 under optimal conditions. The solution is free of unconjugated PE/Cy7 and unconjugated antibody.

Target Details

Target:	CD39 (ENTPD1)
Alternative Name:	CD39 (ENTPD1 Products)
Background:	Human CD39 is an integral membrane protein with two transmembrane domains. It exists as a homotetramer. Expression of CD39 is found on activated lymphocytes, a subset of T cells and B cells, and dendritic cells with weak staining on monocytes and granulocytes. CD39 and CD73

Target Details

have been found on regulatory T cells, specifically the effector/memory like T cells. CD39 can hydrolyze both nucleoside triphosphates and diphosphates. CD39 is the dominant ecto nucleotidase of vascular and placental trophoblastic tissues and appears to modulate the functional expression of type 2 purinergic (P2) G protein coupled receptors (GPCRs). CD39 has intrinsic ecto-ATPase activity. Expression of CD39 is induced on T cells and increased on B cells as a late activation antigen.

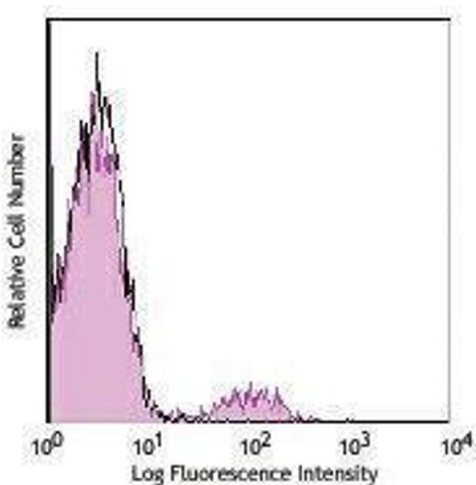
Application Details

Application Notes:	Optimal working dilution should be determined by the investigator.
Restrictions:	For Research Use only

Handling

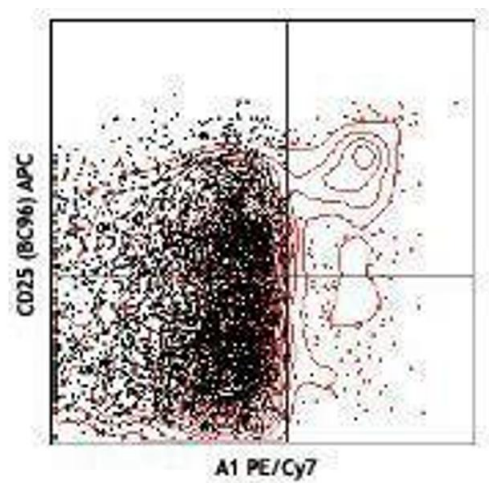
Buffer:	Phosphate-buffered solution, pH 7.2, containing 0.09 % sodium azide and 0.2 % (w/v) BSA .
Preservative:	Sodium azide
Precaution of Use:	This product contains Sodium azide: a POISONOUS AND HAZARDOUS SUBSTANCE which should be handled by trained staff only.
Handling Advice:	Protect from prolonged exposure to light. Do not freeze.
Storage:	4 °C
Storage Comment:	The antibody solution should be stored undiluted between 2°C and 8°C.

Images



Flow Cytometry

Image 1.



Flow Cytometry

Image 2.