



[Go to Product page](#)

Datasheet for ABIN2659889  
**anti-HLA-A antibody (PerCP)**

2 Images

### Overview

Quantity:	100 tests
Target:	HLA-A
Reactivity:	Human, Cynomolgus, Rhesus Monkey
Host:	Mouse
Clonality:	Monoclonal
Conjugate:	This HLA-A antibody is conjugated to PerCP
Application:	Flow Cytometry (FACS)

### Product Details

Clone:	W6-32
Isotype:	IgG2a kappa
Cross-Reactivity:	Chimpanzee, Baboon, Cynomolgus, Rhesus Monkey, Cow (Bovine), Cat (Feline)
Purification:	The antibody was purified by affinity chromatography, and conjugated with PerCP under optimal conditions. The solution is free of unconjugated PerCP and unconjugated antibody.

### Target Details

Target:	HLA-A
Alternative Name:	HLA-A ( <a href="#">HLA-A Products</a> )
Background:	MHC class I antigens associated with $\beta$ 2-microglobulin are expressed by all human nucleated cells. MHC class I molecules are involved in presentation of antigens to CD8+ T cells. They play an important role in cell-mediated immune responses and tumor surveillance.

## Target Details

Pathways: [TCR Signaling](#), [Regulation of Leukocyte Mediated Immunity](#), [Positive Regulation of Immune Effector Process](#), [Cancer Immune Checkpoints](#), [Human Leukocyte Antigen \(HLA\) in Adaptive Immune Response](#)

## Application Details

Application Notes: Optimal working dilution should be determined by the investigator.

Restrictions: For Research Use only

## Handling

Buffer: Phosphate-buffered solution, pH 7.2, containing 0.09 % sodium azide and 0.2 % (w/v) BSA .

Preservative: Sodium azide

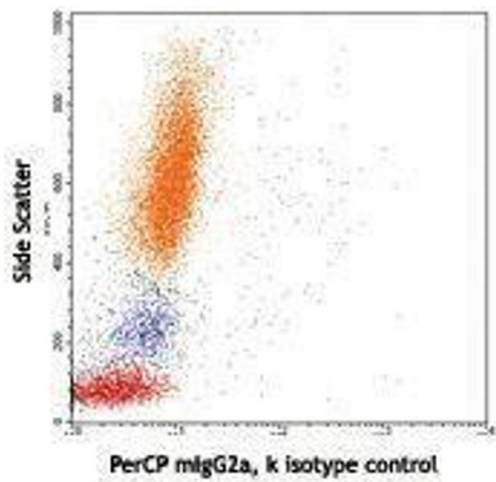
Precaution of Use: This product contains Sodium azide: a POISONOUS AND HAZARDOUS SUBSTANCE which should be handled by trained staff only.

Handling Advice: Protect from prolonged exposure to light. Do not freeze.

Storage: 4 °C

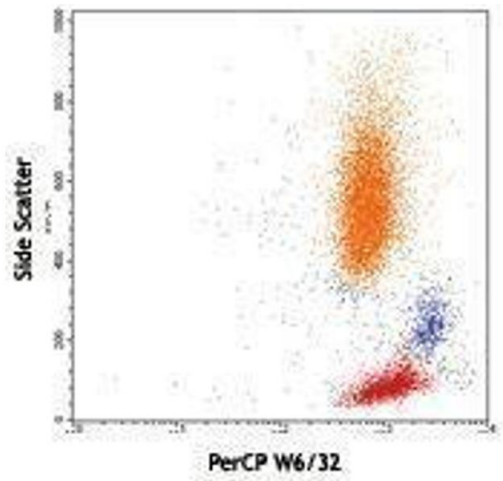
Storage Comment: The antibody solution should be stored undiluted between 2°C and 8°C.

## Images



### Flow Cytometry

Image 1.



Flow Cytometry

Image 2.