

Datasheet for ABIN2660028
anti-CD1d antibody (PerCP-Cy5.5)



[Go to Product page](#)

2 Images

Overview

Quantity:	100 tests
Target:	CD1d (CD1D)
Reactivity:	Human
Host:	Mouse
Clonality:	Monoclonal
Conjugate:	This CD1d antibody is conjugated to PerCP-Cy5.5
Application:	Flow Cytometry (FACS)

Product Details

Clone:	51-1
Isotype:	IgG2b kappa
Purification:	The antibody was purified by affinity chromatography and conjugated with PerCP/Cy5.5 under optimal conditions. The solution is free of unconjugated PerCP/Cy5.5 and unconjugated antibody.

Target Details

Target:	CD1d (CD1D)
Alternative Name:	CD1d (CD1D Products)
Background:	CD1d is a MHC-like, type I transmembrane protein, member of the CD1 family and the immunoglobulin superfamily. On the cell surface, CD1d forms a heterodimer with β 2-microglobulin. CD1d is expressed by antigen-presenting cells such as B cells,

Target Details

monocytes/macrophages, dendritic cells, and some non-lymphoid cells. Cortical thymocytes express CD1d but the expression is lost in mature T cells. CD1d presents lipid antigens to iNKT cells analogous to MHC molecule presentation of peptides to T cells.

Pathways: [Regulation of Leukocyte Mediated Immunity](#), [Positive Regulation of Immune Effector Process](#)

Application Details

Application Notes: Optimal working dilution should be determined by the investigator.

Restrictions: For Research Use only

Handling

Buffer: Phosphate-buffered solution, pH 7.2, containing 0.09 % sodium azide and 0.2 % (w/v) BSA .

Preservative: Sodium azide

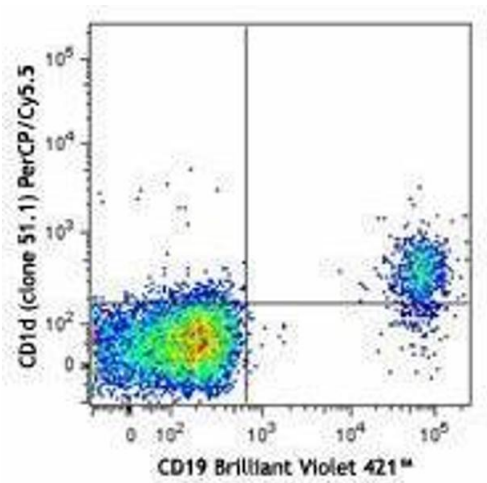
Precaution of Use: This product contains Sodium azide: a POISONOUS AND HAZARDOUS SUBSTANCE which should be handled by trained staff only.

Handling Advice: Protect from prolonged exposure to light. Do not freeze.

Storage: 4 °C

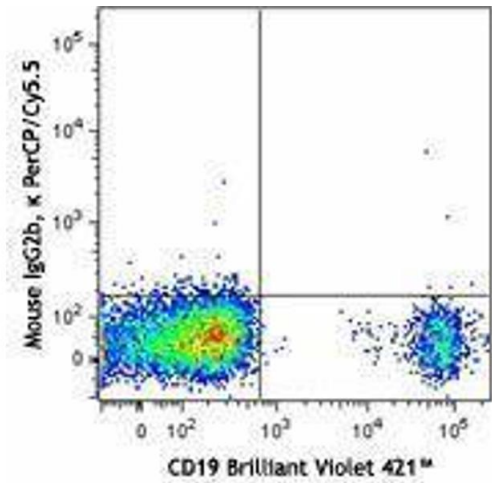
Storage Comment: The antibody solution should be stored undiluted between 2°C and 8°C.

Images



Flow Cytometry

Image 1.



Flow Cytometry

Image 2.