

Datasheet for ABIN2660180

anti-Fc epsilon RI/FCER1A antibody (PerCP-Cy5.5)[Go to Product page](#)**2** Images

Overview

Quantity:	100 tests
Target:	Fc epsilon RI/FCER1A (FCER1A)
Reactivity:	Human
Host:	Mouse
Clonality:	Monoclonal
Conjugate:	This Fc epsilon RI/FCER1A antibody is conjugated to PerCP-Cy5.5
Application:	Flow Cytometry (FACS), Immunohistochemistry (IHC), Immunofluorescence (IF)

Product Details

Clone:	AER-37 (CRA-1)
Isotype:	IgG2b kappa
Purification:	The antibody was purified by affinity chromatography and conjugated with PerCP/Cy5.5 under optimal conditions. The solution is free of unconjugated PerCP/Cy5.5 and unconjugated antibody.

Target Details

Target:	Fc epsilon RI/FCER1A (FCER1A)
Alternative Name:	Fc epsilon RI alpha (FCER1A Products)
Background:	High affinity IgE receptor (FcεRI) plays a key role in IgE-mediated allergic immune response. FcεRI is a tetrameric receptor complex, which is composed of one α-subunit (FcεRIα), one β-subunit, and two γ-subunits. FcεRIα directly binds IgE with high affinity, while the β- and γ-

Target Details

chains are responsible for mediating intracellular signals. FcεRIα is a 50 kD transmembrane protein with Ig superfamily structure. It is primarily found on mast cells and basophils. Further studies have indicated that FcεRIα is also expressed on many inflammatory cells including cutaneous Langerhans cells, dendritic cells, monocytes of patients with allergic disorders, platelets, bronchial epithelial cells, eosinophils produced in hypereosinophilic syndrome, and neutrophils from allergy-induced asthma patients.

Pathways: [Fc-epsilon Receptor Signaling Pathway](#), [Regulation of Leukocyte Mediated Immunity](#), [Positive Regulation of Immune Effector Process](#)

Application Details

Application Notes: Optimal working dilution should be determined by the investigator.

Restrictions: For Research Use only

Handling

Buffer: Phosphate-buffered solution, pH 7.2, containing 0.09 % sodium azide and 0.2 % (w/v) BSA .

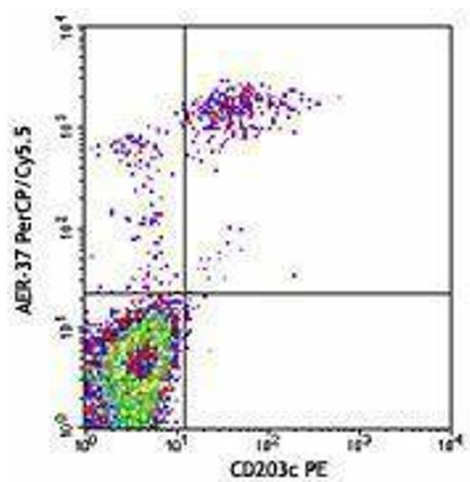
Preservative: Sodium azide

Precaution of Use: This product contains Sodium azide: a POISONOUS AND HAZARDOUS SUBSTANCE which should be handled by trained staff only.

Handling Advice: Protect from prolonged exposure to light. Do not freeze.

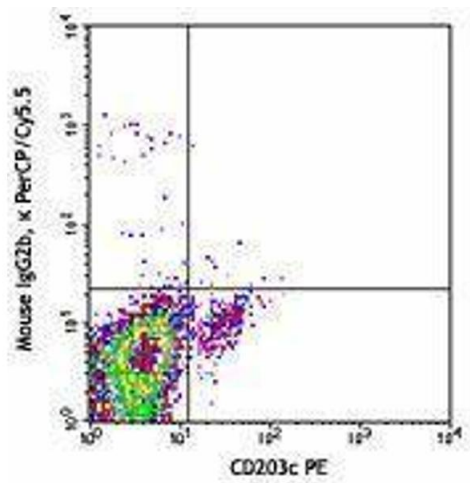
Storage: 4 °C

Storage Comment: The antibody solution should be stored undiluted between 2°C and 8°C.



Flow Cytometry

Image 1.



Flow Cytometry

Image 2.