

Datasheet for ABIN2660475  
**anti-T-Bet antibody (PerCP-Cy5.5)**



[Go to Product page](#)

2 Images

## Overview

Quantity:	100 µg
Target:	T-Bet
Reactivity:	Human, Mouse
Host:	Mouse
Clonality:	Monoclonal
Conjugate:	This T-Bet antibody is conjugated to PerCP-Cy5.5
Application:	Flow Cytometry (FACS)

## Product Details

Clone:	4B10
Isotype:	IgG1 kappa
Purification:	The antibody was purified by affinity chromatography, and conjugated with PerCP/Cy5.5 under optimal conditions. The solution is free of unconjugated PerCP/Cy5.5 and unconjugated antibody.

## Target Details

Target:	T-Bet
Abstract:	<a href="#">T-Bet Products</a>
Background:	T-bet, also known as T-box transcription factor T-bet, is considered to be a "master regulator" of Th1 lymphoid development controlling the production of the cytokine IFN-γ. T-bet is widely expressed in hematopoietic cells including stem cells, NK cells, B cells, and T cells. T-bet is

Target Details

critical for the control of microbial pathogens, and knockout animals show multiple physiologic and inflammatory features characteristic of asthma. T-bet expression is optimally observed after IL-12 stimulation and can be suppressed by addition of the Th2 cytokine IL-4 or neutralization of IL-12.

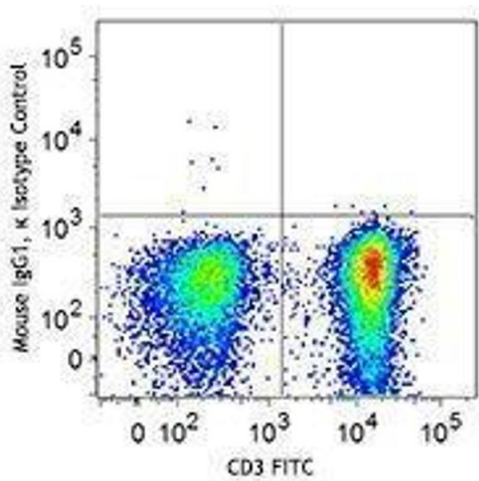
Application Details

Application Notes:	Optimal working dilution should be determined by the investigator.
Restrictions:	For Research Use only

Handling

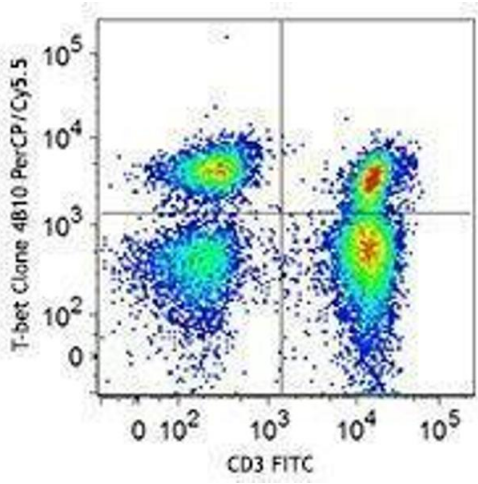
Concentration:	0.2 mg/mL
Buffer:	Phosphate-buffered solution, pH 7.2, containing 0.09 % sodium azide.
Preservative:	Sodium azide
Precaution of Use:	This product contains Sodium azide: a POISONOUS AND HAZARDOUS SUBSTANCE which should be handled by trained staff only.
Storage:	4 °C
Storage Comment:	The antibody solution should be stored undiluted between 2°C and 8°C.

Images



Flow Cytometry

Image 1.



Flow Cytometry

Image 2.