

Datasheet for ABIN2660507
anti-Siglec H antibody (PerCP-Cy5.5)



[Go to Product page](#)

2 Images

Overview

Quantity:	100 µg
Target:	Siglec H
Reactivity:	Mouse
Host:	Rat
Clonality:	Monoclonal
Conjugate:	This Siglec H antibody is conjugated to PerCP-Cy5.5
Application:	Flow Cytometry (FACS), Western Blotting (WB), Blocking Reagent (BR), ELISA (Capture), Immunoprecipitation (IP)

Product Details

Clone:	551
Isotype:	IgG1, IgG1 kappa
Characteristics:	The Siglec-H is a member of CD33-related Siglec family which mostly expressed in the innate immune system. Siglec-H is reported to be specifically expressed on plasmacytoid dendritic cells. Siglec-H depends on adaptor protein DAP 12 (DNAX-activating protein of 12 kD) for surface expression and signal transduction. Cross-linking with this antibody can selectively inhibit interferon-alpha production by IPCs following TLR9 ligation.
Purification:	The antibody was purified by affinity chromatography, and conjugated with PerCP/Cy5.5 under optimal conditions. The solution is free of unconjugated PerCP/Cy5.5 and unconjugated antibody.

Target Details

Target: Siglec H

Abstract: [Siglec H Products](#)

Application Details

Application Notes: Optimal working dilution should be determined by the investigator.

Restrictions: For Research Use only

Handling

Concentration: 0.2 mg/mL

Buffer: Phosphate-buffered solution, pH 7.2, containing 0.09 % sodium azide.

Preservative: Sodium azide

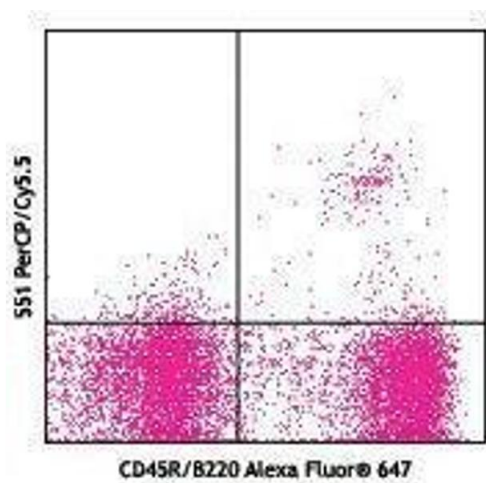
Precaution of Use: This product contains Sodium azide: a POISONOUS AND HAZARDOUS SUBSTANCE which should be handled by trained staff only.

Handling Advice: Protect from prolonged exposure to light. Do not freeze.

Storage: 4 °C

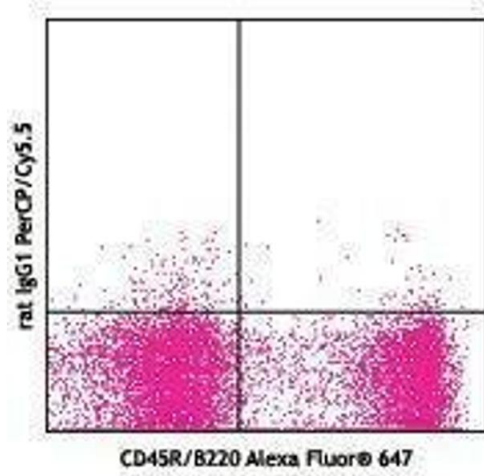
Storage Comment: The antibody solution should be stored undiluted between 2°C and 8°C.

Images



Flow Cytometry

Image 1.



Flow Cytometry

Image 2.