

Datasheet for ABIN2660843
anti-NCR1 antibody (Biotin)[Go to Product page](#)

2 Images

Overview

Quantity:	50 µg
Target:	NCR1
Reactivity:	Mouse
Host:	Rat
Clonality:	Monoclonal
Conjugate:	This NCR1 antibody is conjugated to Biotin
Application:	ELISA (Detection), ELISpot (Detection) (ELISPOT (Detection))

Product Details

Clone:	29A1-4
Isotype:	IgG2a kappa
Purification:	The antibody was purified by affinity chromatography, and conjugated with biotin under optimal conditions. The solution is free of unconjugated biotin.

Target Details

Target:	NCR1
Alternative Name:	CD335 (NCR1 Products)
Background:	CD335, also known as NKp46, is a single-pass type I membrane protein of 46 kD. It belongs to the natural cytotoxicity receptor (NCR) family and contains two Ig-like (immunoglobulin-like) domains. It's expression is restricted to NK cells and a subset of NK-like T cells, it's not expressed in CD1d-restricted NKT cells. CD335 is a receptor for viral hemagglutinins and

Target Details

heparan sulfate proteoglycans and is involved in NK cell activation.

Pathways: [Regulation of Leukocyte Mediated Immunity](#)

Application Details

Application Notes: Optimal working dilution should be determined by the investigator.

Restrictions: For Research Use only

Handling

Concentration: 0.5 mg/mL

Buffer: Phosphate-buffered solution, pH 7.2, containing 0.09 % sodium azide.

Preservative: Sodium azide

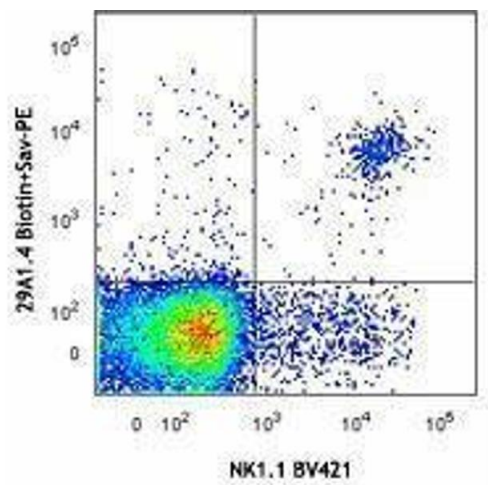
Precaution of Use: This product contains Sodium azide: a POISONOUS AND HAZARDOUS SUBSTANCE which should be handled by trained staff only.

Handling Advice: Protect from prolonged exposure to light. Do not freeze.

Storage: 4 °C

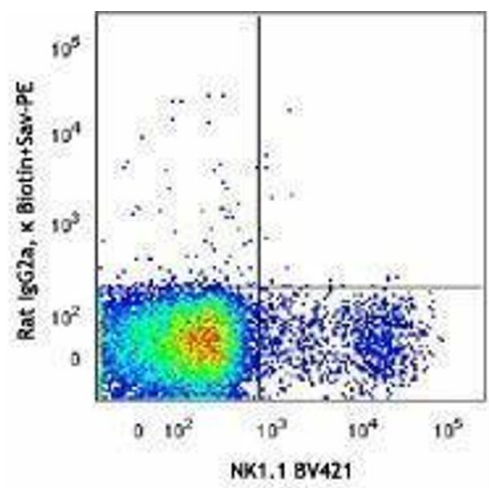
Storage Comment: The antibody solution should be stored undiluted between 2°C and 8°C.

Images



Flow Cytometry

Image 1.



Flow Cytometry

Image 2.