

Datasheet for ABIN2660883

**anti-Phycoerythrin antibody (Biotin)****2** Images[Go to Product page](#)

## Overview

Quantity:	100 µg
Target:	Phycoerythrin
Reactivity:	Please inquire
Host:	Mouse
Clonality:	Monoclonal
Conjugate:	This Phycoerythrin antibody is conjugated to Biotin
Application:	Flow Cytometry (FACS)

## Product Details

Clone:	PE001
Isotype:	IgG1 kappa
Characteristics:	The PE001 antibody reacts with both phycoerythrin (PE) alone and PE conjugated with antibody or streptavidin, as well as PE tandem dyes such as PE/Cy5, PE/Cy5.5 and PE/Cy7. When PE001 antibody is used in a three-step staining procedure or separation of PE-antibody labeled cells, it does not quench PE fluorescence or react with tested mouse and human cells. The PE001 antibody can be used for separation of PE-antibody labeled cells or as a secondary step to amplify PE conjugated primary antibody signals (i.e. biotinylated PE001 as secondary step, followed by Streptavidin-PE).
Purification:	The antibody was purified by affinity chromatography, and conjugated with biotin under optimal conditions. The solution is free of unconjugated biotin.

## Target Details

Target:	Phycoerythrin
Abstract:	<a href="#">Phycoerythrin Products</a>
Target Type:	Chemical

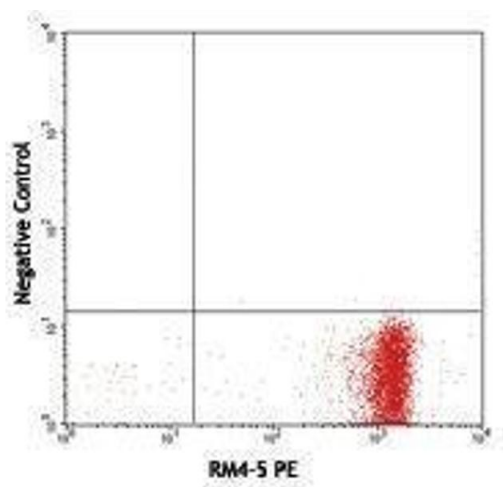
## Application Details

Application Notes:	Optimal working dilution should be determined by the investigator.
Restrictions:	For Research Use only

## Handling

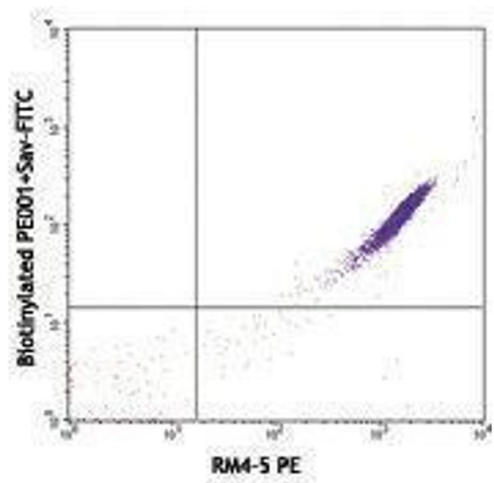
Concentration:	0.5 mg/mL
Buffer:	Phosphate-buffered solution, pH 7.2, containing 0.09 % sodium azide.
Preservative:	Sodium azide
Precaution of Use:	This product contains Sodium azide: a POISONOUS AND HAZARDOUS SUBSTANCE which should be handled by trained staff only.
Handling Advice:	Do not freeze.
Storage:	4 °C
Storage Comment:	The antibody solution should be stored undiluted between 2°C and 8°C.

## Images



### Flow Cytometry

Image 1.



Flow Cytometry

Image 2.