

Datasheet for ABIN2661367  
**anti-CXCR5 antibody (FITC)**



[Go to Product page](#)

2 Images

## Overview

Quantity:	100 µg
Target:	CXCR5
Reactivity:	Mouse
Host:	Rat
Clonality:	Monoclonal
Conjugate:	This CXCR5 antibody is conjugated to FITC
Application:	Intracellular Flow Cytometry (ICFC)

## Product Details

Clone:	L138D7
Isotype:	IgG2b kappa
Purification:	The antibody was purified by affinity chromatography and conjugated with FITC under optimal conditions. The solution is free of unconjugated FITC and unconjugated antibody.

## Target Details

Target:	CXCR5
Alternative Name:	CD185 ( <a href="#">CXCR5 Products</a> )
Background:	CD185 is also known as CXCR5. It is the receptor for chemokine CXCL13/BLC, which is chemotactic for B cells. CXCR5 is expressed on B cells and a subset of T cells in the spleen, neuronal tissue, lymph nodes, and bone marrow. It is important for migration of B cells into the B cell follicles of the spleen and Peyer's patches. Follicular helper T cells (Tfh) also express

## Target Details

CXCR5 and the ability of these cells to migrate to the lymph node is modulated by the balanced expression of CCR7 and CXCR5.

## Application Details

Application Notes: Optimal working dilution should be determined by the investigator.

Restrictions: For Research Use only

## Handling

Concentration: 0.2 mg/mL

Buffer: Phosphate-buffered solution, pH 7.2, containing 0.09 % sodium azide.

Preservative: Sodium azide

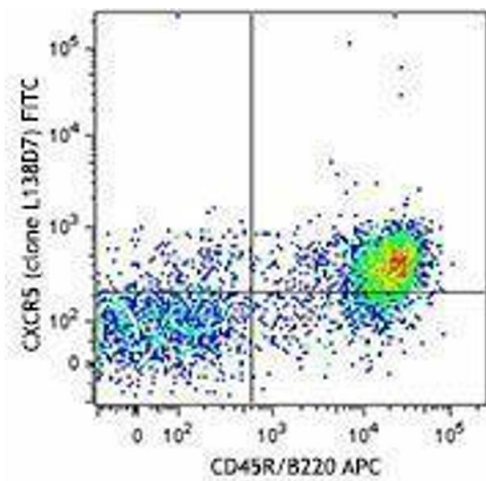
Precaution of Use: This product contains Sodium azide: a POISONOUS AND HAZARDOUS SUBSTANCE which should be handled by trained staff only.

Handling Advice: Protect from prolonged exposure to light. Do not freeze.

Storage: 4 °C

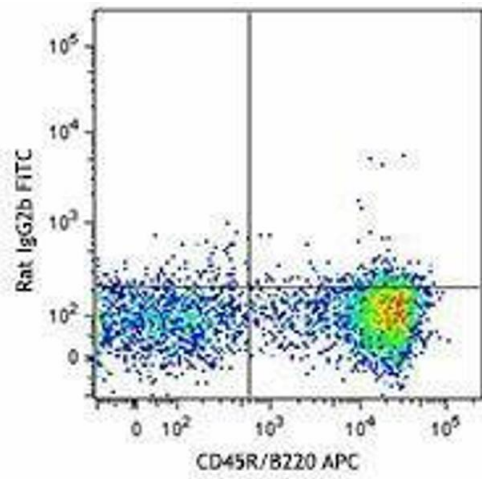
Storage Comment: The antibody solution should be stored undiluted between 2°C and 8°C.

## Images



### Flow Cytometry

Image 1.



## Flow Cytometry

Image 2.