

Datasheet for ABIN2661406

anti-CD41, CD61 antibody (FITC)[Go to Product page](#)**2** Images

Overview

Quantity:	100 tests
Target:	CD41, CD61
Reactivity:	Human
Host:	Mouse
Clonality:	Monoclonal
Conjugate:	This CD41, CD61 antibody is conjugated to FITC
Application:	Flow Cytometry (FACS)

Product Details

Clone:	PAC-1
Isotype:	IgM kappa
Purification:	The antibody was purified by affinity chromatography and conjugated with FITC under optimal conditions. The solution is free of unconjugated FITC and unconjugated antibody.

Target Details

Target:	CD41, CD61
Alternative Name:	CD41/CD61 (CD41, CD61 Products)
Background:	The gpIIb/IIIa complex, also known as integrin $\alpha\text{IIb}\beta 3$, is expressed by megakaryocytes and platelets. It undergoes conformational changes upon activation by substances, such as ADP, thrombin, and TXA ₂ , which subsequently reveals a ligand binding site that is specific for fibrinogen, von Willebrand factor (vWF), fibronectin, and vitronectin. This conformational

Target Details

change is crucial for platelet-platelet adhesion. Ligand bound gpIIb/IIIa complex promotes platelet aggregation. This complex plays an important role in hemostasis and is a target for developing therapeutic antibodies in immune thrombocytopenia.

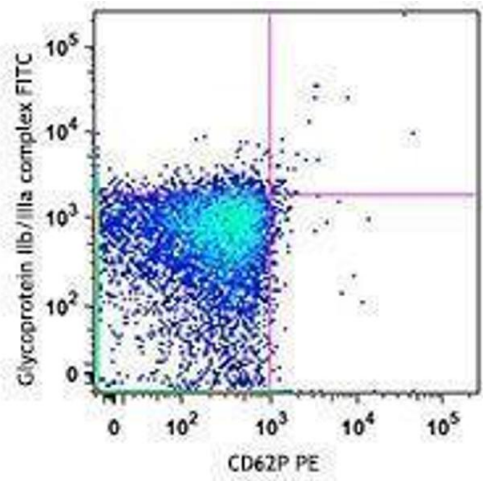
Application Details

Application Notes:	Optimal working dilution should be determined by the investigator.
Restrictions:	For Research Use only

Handling

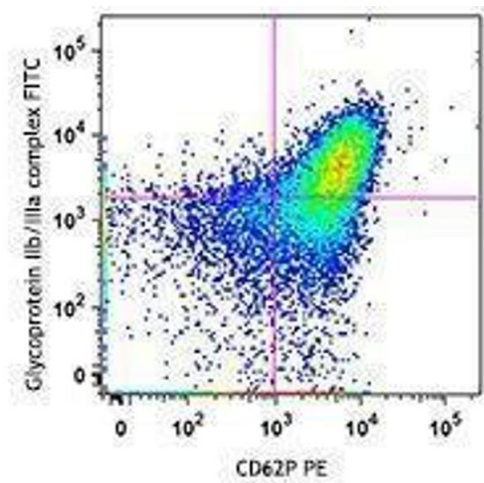
Buffer:	Phosphate-buffered solution, pH 7.2, containing 0.09 % sodium azide and 0.2 % (w/v) BSA .
Preservative:	Sodium azide
Precaution of Use:	This product contains Sodium azide: a POISONOUS AND HAZARDOUS SUBSTANCE which should be handled by trained staff only.
Handling Advice:	Protect from prolonged exposure to light. Do not freeze.
Storage:	4 °C
Storage Comment:	The antibody solution should be stored undiluted between 2°C and 8°C.

Images



Flow Cytometry

Image 1.



Flow Cytometry

Image 2.