

Datasheet for ABIN2661679  
**anti-NCR1 antibody (FITC)**[Go to Product page](#)

## 2 Images

## Overview

Quantity:	100 µg
Target:	NCR1
Reactivity:	Mouse
Host:	Rat
Clonality:	Monoclonal
Conjugate:	This NCR1 antibody is conjugated to FITC
Application:	Western Blotting (WB), ELISA (Capture)

## Product Details

Clone:	29A1-4
Isotype:	IgG2a kappa
Purification:	The antibody was purified by affinity chromatography, and conjugated with FITC under optimal conditions. The solution is free of unconjugated FITC.

## Target Details

Target:	NCR1
Alternative Name:	CD335 ( <a href="#">NCR1 Products</a> )
Background:	CD335, also known as NKp46, is a single-pass type I membrane protein of 46 kD. It belongs to the natural cytotoxicity receptor (NCR) family and contains two Ig-like (immunoglobulin-like) domains. It's expression is restricted to NK cells and a subset of NK-like T cells, it's not expressed in CD1d-restricted NKT cells. CD335 is a receptor for viral hemagglutinins and

## Target Details

heparan sulfate proteoglycans and is involved in NK cell activation.

Pathways: [Regulation of Leukocyte Mediated Immunity](#)

## Application Details

Application Notes: Optimal working dilution should be determined by the investigator.

Restrictions: For Research Use only

## Handling

Concentration: 0.5 mg/mL

Buffer: Phosphate-buffered solution, pH 7.2, containing 0.09 % sodium azide.

Preservative: Sodium azide

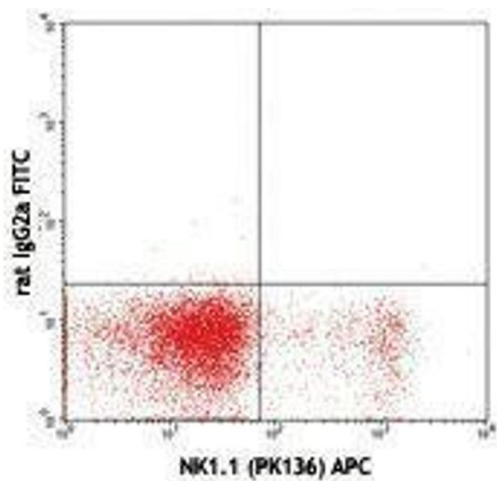
Precaution of Use: This product contains Sodium azide: a POISONOUS AND HAZARDOUS SUBSTANCE which should be handled by trained staff only.

Handling Advice: Protect from prolonged exposure to light. Do not freeze.

Storage: 4 °C

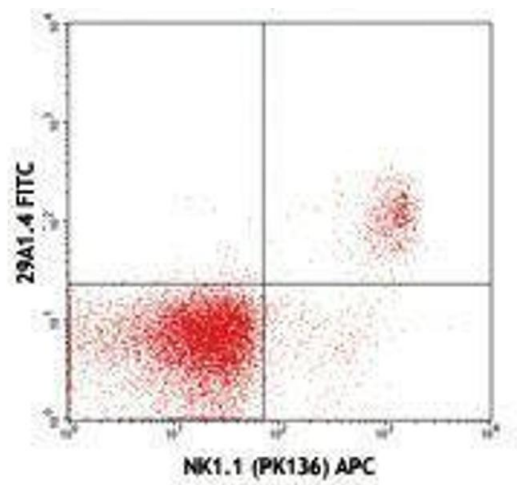
Storage Comment: The antibody solution should be stored undiluted between 2°C and 8°C.

## Images



### Flow Cytometry

Image 1.



Flow Cytometry

Image 2.