



Datasheet for ABIN2661850
anti-CD8b.2 antibody (FITC)



[Go to Product page](#)

1 Image

Overview

Quantity:	50 µg
Target:	CD8b.2 (CD8BP)
Reactivity:	Mouse
Host:	Rat
Clonality:	Monoclonal
Conjugate:	This CD8b.2 antibody is conjugated to FITC
Application:	Flow Cytometry (FACS)

Product Details

Clone:	53-5-8
Isotype:	IgG1 kappa
Purification:	The antibody was purified by affinity chromatography, and conjugated with FITC under optimal conditions. The solution is free of unconjugated FITC.

Target Details

Target:	CD8b.2 (CD8BP)
Alternative Name:	CD8b.2 (CD8BP Products)
Background:	CD8b is the 32 kD β chain of CD8, also known as Lyt-3.2 or Ly-3.2. It is a member of the Ig superfamily expressed as a heterodimer with the CD8α chain on a subset of MHC class I-restricted T cells and most thymocytes. CD8 is a co-receptor for the TCR complex involved in T cell activation. The antibody 53-5.8 is specific for Ly-3.2 and has low reactivity with Ly-3.1.

Application Details

Application Notes: Optimal working dilution should be determined by the investigator.

Restrictions: For Research Use only

Handling

Concentration: 0.5 mg/mL

Buffer: Phosphate-buffered solution, pH 7.2, containing 0.09 % sodium azide.

Preservative: Sodium azide

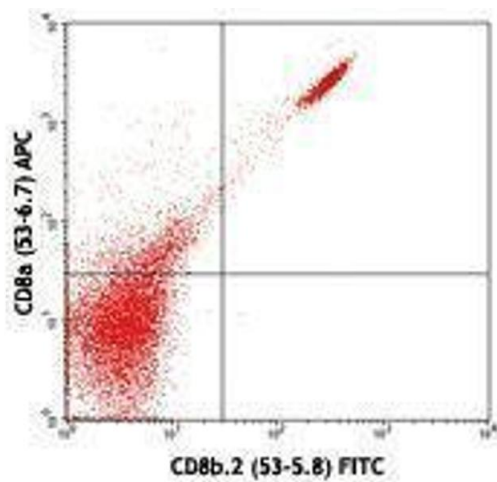
Precaution of Use: This product contains Sodium azide: a POISONOUS AND HAZARDOUS SUBSTANCE which should be handled by trained staff only.

Handling Advice: Protect from prolonged exposure to light. Do not freeze.

Storage: 4 °C

Storage Comment: The antibody solution should be stored undiluted between 2°C and 8°C.

Images



Flow Cytometry

Image 1.