



[Go to Product page](#)

Datasheet for ABIN2661969  
**anti-LY6D antibody (FITC)**

2 Images

### Overview

Quantity:	100 µg
Target:	LY6D
Reactivity:	Mouse
Host:	Rat
Clonality:	Monoclonal
Conjugate:	This LY6D antibody is conjugated to FITC
Application:	Flow Cytometry (FACS), Activation (Act)

### Product Details

Clone:	49-H4
Isotype:	IgG2c kappa
Purification:	The antibody was purified by affinity chromatography, and conjugated with FITC under optimal conditions. The solution is free of unconjugated FITC.

### Target Details

Target:	LY6D
Alternative Name:	Ly-6D ( <a href="#">LY6D Products</a> )
Background:	Lymphocyte antigen 6D (Ly-6D), also known as thymocyte B-cell antigen (ThB), is a 16 kD GPI-linked cell surface glycoprotein. It belongs to the Ly6 gene family and contains one urokinase receptor (uPAR) /Ly6 domain. Ly-6D is involved in cell-cell adhesion and signal transduction. Ly-6D marks the earliest stage of B cell lineage commitment from the common lymphoid

## Target Details

progenitors (CLP). It is expressed on B cells, immature thymocytes, and plasmacytoid dendritic cells.

## Application Details

Application Notes: Optimal working dilution should be determined by the investigator.

Restrictions: For Research Use only

## Handling

Concentration: 0.5 mg/mL

Buffer: Phosphate-buffered solution, pH 7.2, containing 0.09 % sodium azide.

Preservative: Sodium azide

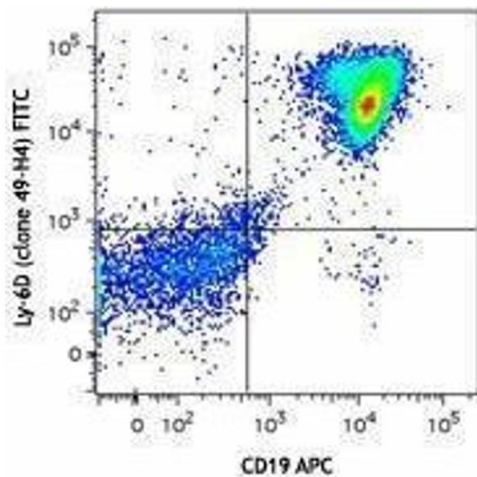
Precaution of Use: This product contains Sodium azide: a POISONOUS AND HAZARDOUS SUBSTANCE which should be handled by trained staff only.

Handling Advice: Protect from prolonged exposure to light. Do not freeze.

Storage: 4 °C

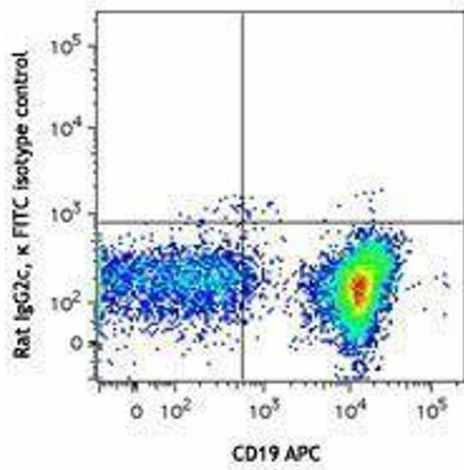
Storage Comment: The antibody solution should be stored undiluted between 2°C and 8°C.

## Images



### Flow Cytometry

Image 1.



## Flow Cytometry

Image 2.