



[Go to Product page](#)

Datasheet for ABIN2661975  
**anti-Klra4 antibody (FITC)**

2 Images

Overview

Quantity:	50 µg
Target:	Klra4
Reactivity:	Mouse
Host:	Rat
Clonality:	Monoclonal
Conjugate:	This Klra4 antibody is conjugated to FITC
Application:	Flow Cytometry (FACS)

Product Details

Clone:	4E5
Isotype:	IgG2a kappa
Purification:	The antibody was purified by affinity chromatography, and conjugated with FITC under optimal conditions. The solution is free of unconjugated FITC.

Target Details

Target:	Klra4
Alternative Name:	Ly49D ( <a href="#">Klra4 Products</a> )
Background:	Ly49D is a type II transmembrane protein belonging to the Ly49 family of NK-cell receptors in the C-type lectin superfamily. Ly49D is expressed on subsets of natural killer (NK) cells in C57BL/6, C3H/He and SJL mouse strains, but not Balb/c, DBA/2, AKR and CBA/J. The receptors form homodimers that bind to MHC class I alloantigens. Unlike inhibitory Ly49 family

## Target Details

members, Ly49D lacks a cytoplasmic immunoreceptor tyrosine-based inhibitory motif (ITIM) but contains a cytoplasmic immunoreceptor tyrosine-based activation motif. The activating receptor Ly49D delivers stimulatory signals for target cell lysis upon interacting with H2-Dd, Dr and Dsp2, but not with H2b or H2k class I antigens. Cross-linking of Ly49D activates intracellular kinase activity and calcium mobilization in NK cells. In 129/J mice, 4E5 antibody cross-reacts with Ly490, LY49R and Ly49V.

## Application Details

Application Notes: Optimal working dilution should be determined by the investigator.

Restrictions: For Research Use only

## Handling

Concentration: 0.5 mg/mL

Buffer: Phosphate-buffered solution, pH 7.2, containing 0.09 % sodium azide.

Preservative: Sodium azide

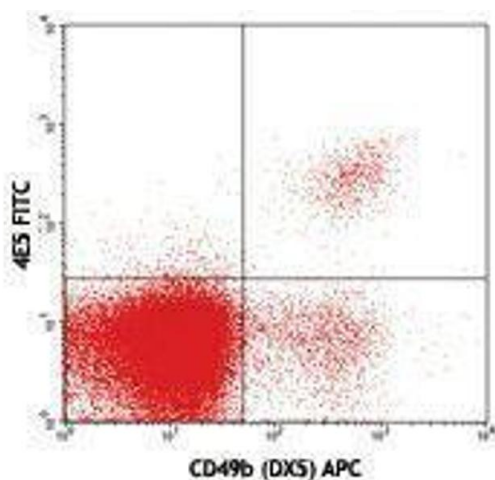
Precaution of Use: This product contains Sodium azide: a POISONOUS AND HAZARDOUS SUBSTANCE which should be handled by trained staff only.

Handling Advice: Protect from prolonged exposure to light. Do not freeze.

Storage: 4 °C

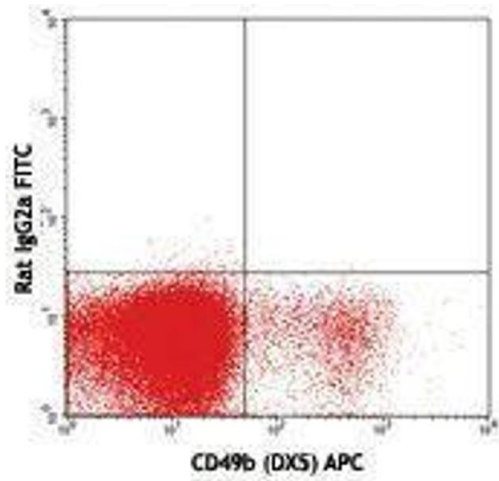
Storage Comment: The antibody solution should be stored undiluted between 2°C and 8°C.

## Images



### Flow Cytometry

Image 1.



Flow Cytometry

Image 2.