

Datasheet for ABIN2662220
anti-CD1d antibody (Pacific Blue)



[Go to Product page](#)

2 Images

Overview

Quantity:	100 µg
Target:	CD1d (CD1D)
Reactivity:	Mouse
Host:	Rat
Clonality:	Monoclonal
Conjugate:	This CD1d antibody is conjugated to Pacific Blue
Application:	Flow Cytometry (FACS), Immunofluorescence (IF)

Product Details

Clone:	1B1
Isotype:	IgG2b kappa
Purification:	The antibody was purified by affinity chromatography, and conjugated with Pacific Blue™ under optimal conditions. The solution is free of unconjugated Pacific Blue™.

Target Details

Target:	CD1d (CD1D)
Alternative Name:	CD1d (CD1D Products)
Background:	CD1d, known as CD1.1 and Ly-38, is a 48 kD type I membrane glycoprotein with structural similarities to MHC class I and is non-covalently associated with β2-microglobulin. In humans, CD1 family consists of group I proteins (CD1a, CD1b, and CD1c), group II (CD1d), and group III (CD1e). But CD1d is the only CD1 Molecule has been found in mouse. Mouse CD1d has broad

Target Details

tissue distribution, and is found on leukocytes, dendritic cells, epithelial cells, and thymocytes. CD1d plays a role in non-peptide glycolipid antigen presentation to CD1d-restricted T cells. It has been shown that PKCδ is a critical regulator of CD1d-mediated antigen presentation.

Pathways: [Regulation of Leukocyte Mediated Immunity](#), [Positive Regulation of Immune Effector Process](#)

Application Details

Application Notes: Optimal working dilution should be determined by the investigator.

Restrictions: For Research Use only

Handling

Concentration: 0.5 mg/mL

Buffer: Phosphate-buffered solution, pH 7.2, containing 0.09 % sodium azide.

Preservative: Sodium azide

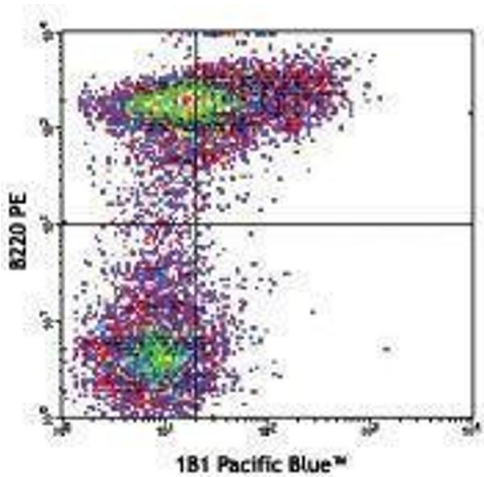
Precaution of Use: This product contains Sodium azide: a POISONOUS AND HAZARDOUS SUBSTANCE which should be handled by trained staff only.

Handling Advice: Protect from prolonged exposure to light. Do not freeze.

Storage: 4 °C

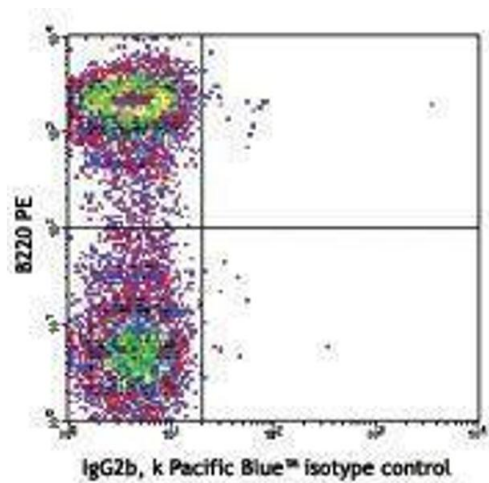
Storage Comment: The antibody solution should be stored undiluted between 2°C and 8°C.

Images



Flow Cytometry

Image 1.



Flow Cytometry

Image 2.