



[Go to Product page](#)

Datasheet for ABIN2662337

anti-MHC, Class I antibody (Pacific Blue)

2 Images

Overview

| | |
|--------------|--|
| Quantity: | 100 µg |
| Target: | MHC, Class I |
| Reactivity: | Mouse |
| Host: | Mouse |
| Clonality: | Monoclonal |
| Conjugate: | This MHC, Class I antibody is conjugated to Pacific Blue |
| Application: | Flow Cytometry (FACS) |

Product Details

| | |
|-----------------------------|--|
| Clone: | SF1-1-1 |
| Isotype: | IgG2a kappa |
| Cross-Reactivity (Details): | Mouse d haplotype, Weakly cross-reacts with H-2k haplotype, Does not cross react with other haplotypes (e.g., b, j, p, q, s, v). |
| Characteristics: | The SF1-1.1 antibody reacts with the H-2Kd MHC class I alloantigens expressed on nucleated cells from mice of the H-2Kd haplotype. H-2Kd is involved in antigen presentation to T cells expressing CD3/TCR and CD8 proteins. |
| Purification: | The antibody was purified by affinity chromatography, and conjugated with Pacific Blue™ under optimal conditions. The solution is free of unconjugated Pacific Blue™. |

Target Details

| | |
|---------|--------------|
| Target: | MHC, Class I |
|---------|--------------|

Target Details

Alternative Name: H-2Kd ([MHC, Class I Products](#))

Application Details

Application Notes: Optimal working dilution should be determined by the investigator.

Restrictions: For Research Use only

Handling

Concentration: 0.5 mg/mL

Buffer: Phosphate-buffered solution, pH 7.2, containing 0.09 % sodium azide.

Preservative: Sodium azide

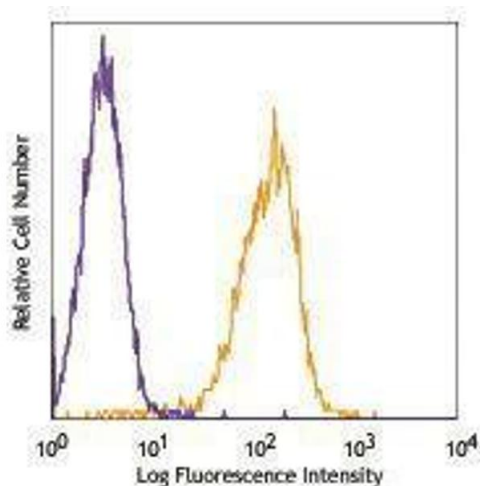
Precaution of Use: This product contains Sodium azide: a POISONOUS AND HAZARDOUS SUBSTANCE which should be handled by trained staff only.

Handling Advice: Protect from prolonged exposure to light. Do not freeze.

Storage: 4 °C

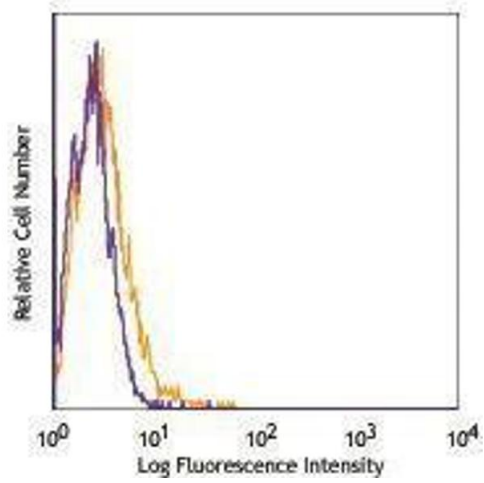
Storage Comment: The antibody solution should be stored undiluted between 2°C and 8°C.

Images



Flow Cytometry

Image 1.



Flow Cytometry

Image 2.