



[Go to Product page](#)

Datasheet for ABIN2662362
anti-SLAMF6 antibody (Pacific Blue)

2 Images

Overview

Quantity:	100 µg
Target:	SLAMF6
Reactivity:	Mouse
Host:	Mouse
Clonality:	Monoclonal
Conjugate:	This SLAMF6 antibody is conjugated to Pacific Blue
Application:	Flow Cytometry (FACS)

Product Details

Clone:	330-AJ
Isotype:	IgG2a kappa
Purification:	The antibody was purified by affinity chromatography, and conjugated with Pacific Blue™ under optimal conditions. The solution is free of unconjugated Pacific Blue™.

Target Details

Target:	SLAMF6
Alternative Name:	Ly108 (SLAMF6 Products)
Background:	Mouse Ly108, also known as SLAMF6 and NTB-A (NK cell, T cell, B cell antigen), is one of the members in The Signaling Lymphocytic Activation Molecule (SLAM) family of immune receptors. It is expressed on T cells, B cells, macrophages, dendritic cells, NK cells, and granulocytes. Homophilic interaction of Ly108 is involved in augmenting cytotoxicity of NK

Target Details

cells. Ly108 has been shown to function on NK cells by augmenting cytotoxicity. It was reported that Ly108 plays an important role in CD4+ T cell responses and innate immunity to bacteria and parasites. In a mouse with a targeted disruption of the Ly108 gene, CD4+ T cells and innate responses are defective. SLAM family of receptors has been implicated in the pathophysiology of autoimmunity. For instance, Ly108 is strongly linked to lupus susceptibility in mice. Ly108 may censor self-reactive B cells as a potential regulator of tolerance checkpoints, safeguarding against autoimmunity. Therefore, Ly108 serves as a regulator of both innate and adaptive immune responses.

Application Details

Application Notes: Optimal working dilution should be determined by the investigator.

Restrictions: For Research Use only

Handling

Concentration: 0.5 mg/mL

Buffer: Phosphate-buffered solution, pH 7.2, containing 0.09 % sodium azide.

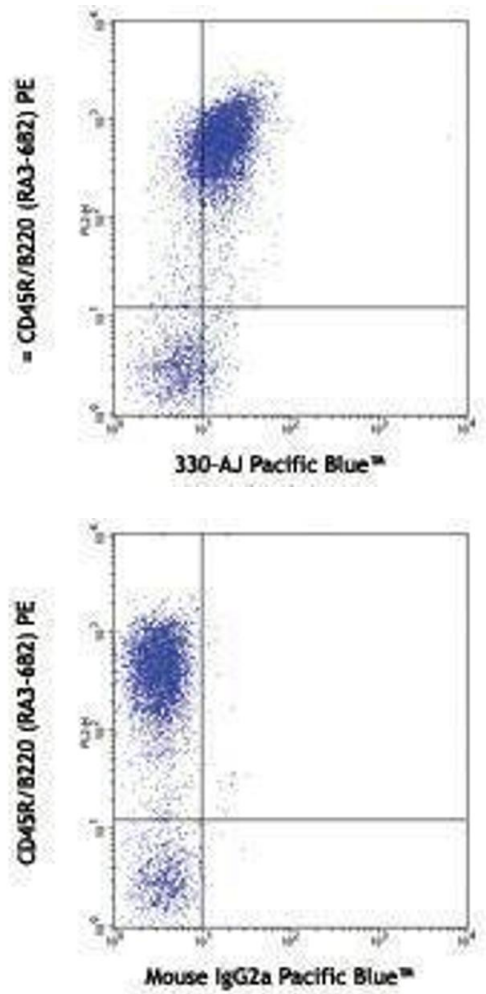
Preservative: Sodium azide

Precaution of Use: This product contains Sodium azide: a POISONOUS AND HAZARDOUS SUBSTANCE which should be handled by trained staff only.

Handling Advice: Protect from prolonged exposure to light. Do not freeze.

Storage: 4 °C

Storage Comment: The antibody solution should be stored undiluted between 2°C and 8°C.



Flow Cytometry

Image 1.

Flow Cytometry

Image 2.