



[Go to Product page](#)

Datasheet for ABIN2662394  
**anti-Basophils antibody (PE)**

2 Images

### Overview

|              |   |
|--------------|---|
| Quantity:    | 100 tests                                   |
| Target:      | Basophils                                   |
| Reactivity:  | Human                                       |
| Host:        | Mouse                                       |
| Clonality:   | Monoclonal                                  |
| Conjugate:   | This Basophils antibody is conjugated to PE |
| Application: | Intracellular Flow Cytometry (ICFC), ELISA  |

### Product Details

|                  |   |
|------------------|---|
| Clone:           | Basophil-2D7  |
| Isotype:         | IgG1 kappa  |
| Characteristics: | The Basophil/2D7 mAb specifically recognizes the human basophil population. The antigen that this antibody binds is present in cell granules but its identity is still unknown. |
| Purification:    | The antibody was purified by affinity chromatography and conjugated with PE under optimal conditions. The solution is free of unconjugated PE and unconjugated antibody.        |

### Target Details

|           |                                    |
|-----------|------------------------------------|
| Target:   | Basophils                          |
| Abstract: | <a href="#">Basophils Products</a> |

## Application Details

Application Notes: Optimal working dilution should be determined by the investigator.

Restrictions: For Research Use only

## Handling

Buffer: Phosphate-buffered solution, pH 7.2, containing 0.09 % sodium azide and 0.2 % (w/v) BSA .

Preservative: Sodium azide

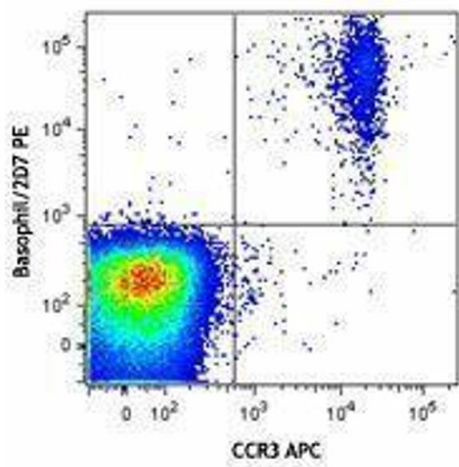
Precaution of Use: This product contains Sodium azide: a POISONOUS AND HAZARDOUS SUBSTANCE which should be handled by trained staff only.

Handling Advice: Protect from prolonged exposure to light. Do not freeze.

Storage: 4 °C

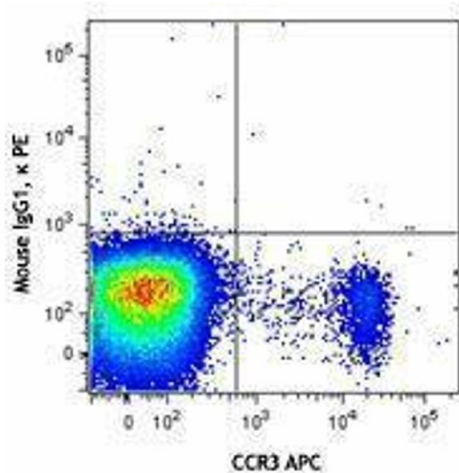
Storage Comment: The antibody solution should be stored undiluted between 2°C and 8°C.

## Images



### Flow Cytometry

Image 1.



### Flow Cytometry

Image 2.